

## VEGFC Antibody

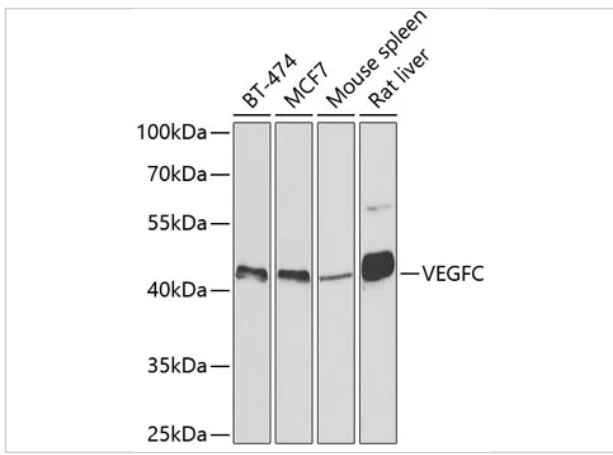
CATALOG NUMBER: 18-707

### Specifications

<b>Host Species</b>	Rabbit
<b>Species Reactivity</b>	Human, Mouse, Rat
<b>Immunogen</b>	A synthetic peptide of human VEGFC
<b>Conjugate</b>	Unconjugated
<b>Tested Applications</b>	IHC, WB
<b>User Note</b>	Optimal dilutions for each application to be determined by the researcher.
<b>Predicted Molecular Weight</b>	Observed: 47kDa

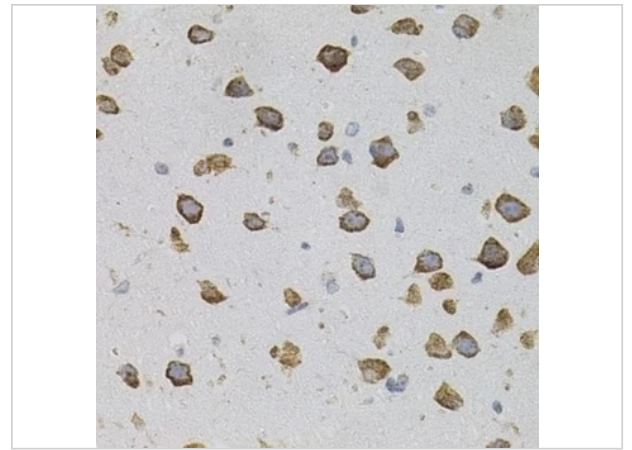
### Properties

<b>Purification</b>	Affinity purification
<b>Clonality</b>	Polyclonal
<b>Isotype</b>	IgG
<b>Physical State</b>	Liquid
<b>Buffer</b>	PBS with 0.02% sodium azide, 50% glycerol, pH7.3.
<b>Concentration</b>	batch dependent
<b>Storage Conditions</b>	Store at -20°C. Avoid freeze / thaw cycles.



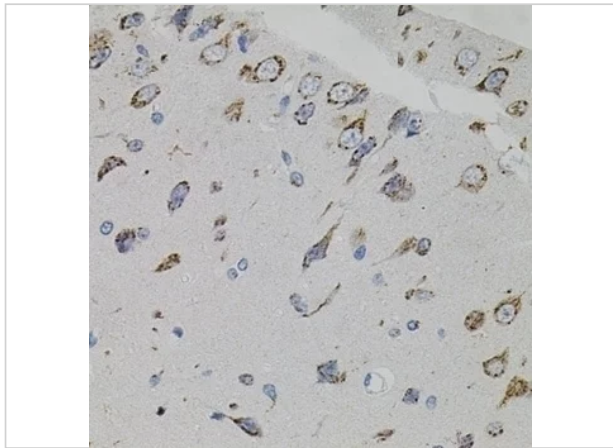
### VEGFC Antibody 1

Western blot analysis of extracts of various cell lines, using VEGFC antibody (18-707) at 1:500 dilution. Secondary antibody: HRP Goat Anti-Rabbit IgG (H+L) at 1:10000 dilution. Lysates/pro...



### VEGFC Antibody 2

Immunohistochemistry of paraffin-embedded mouse brain using VEGFC antibody (18-707) (40x lens).



### VEGFC Antibody 3

Immunohistochemistry of paraffin-embedded rat brain using VEGFC antibody (18-707) (40x lens).

## Disclaimer

<b>Disclaimer</b>	Optimal dilutions/concentrations should be determined by the end user. The information provided is a guideline for product use. This product is for research use only.
-------------------	--

For research use only. For additional information, visit ProSci's [Terms and Conditions Page](#).