

## UPP2 Antibody

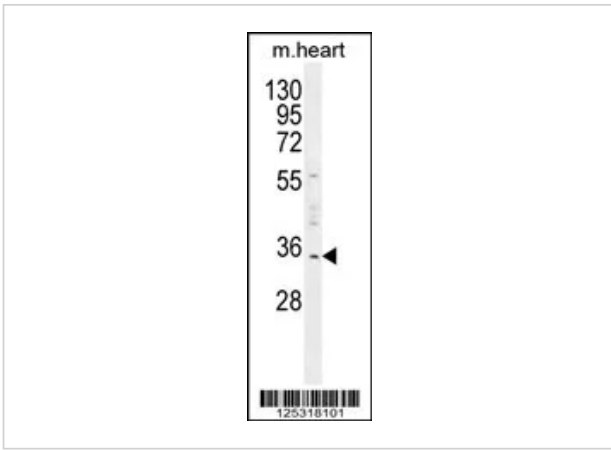
CATALOG NUMBER: 55-545

### Specifications

<b>Host Species</b>	Rabbit
<b>Species Reactivity</b>	Human, Mouse
<b>Immunogen</b>	This UPP2 antibody is generated from rabbits immunized with a KLH conjugated synthetic peptide between 217-244 amino acids from the C-terminal region of human UPP2.
<b>Conjugate</b>	Unconjugated
<b>Tested Applications</b>	IHC-P, WB
<b>User Note</b>	Optimal dilutions for each application to be determined by the researcher.
<b>Predicted Molecular Weight</b>	36 kDa

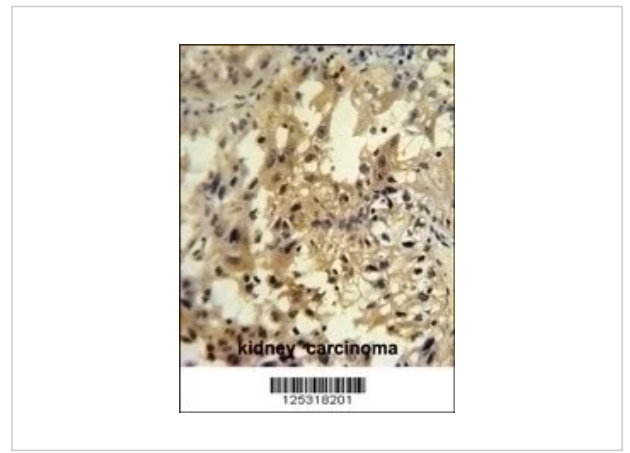
### Properties

<b>Purification</b>	This antibody is purified through a protein A column, followed by peptide affinity purification.
<b>Clonality</b>	Polyclonal
<b>Isotype</b>	Rabbit Ig
<b>Physical State</b>	Liquid
<b>Buffer</b>	Supplied in PBS with 0.09% (W/V) sodium azide.
<b>Concentration</b>	batch dependent
<b>Storage Conditions</b>	Store at 4°C for three months and -20°C, stable for up to one year. As with all antibodies care should be taken to avoid repeated freeze thaw cycles. Antibodies should not be exposed to prolonged high temperatures.



## UPP2 Antibody 1

Western blot analysis in mouse heart tissue lysates (35ug/lane).



## UPP2 Antibody 2

UPP2 antibody immunohistochemistry analysis in formalin fixed and paraffin embedded human kidney carcinoma followed by peroxidase conjugation of the secondary antibody and DAB staining.

## Disclaimer

<b>Disclaimer</b>	Optimal dilutions/concentrations should be determined by the end user. The information provided is a guideline for product use. This product is for research use only.
-------------------	--

For research use only. For additional information, visit ProSci's [Terms and Conditions Page](#).