

TIM-1 Antibody

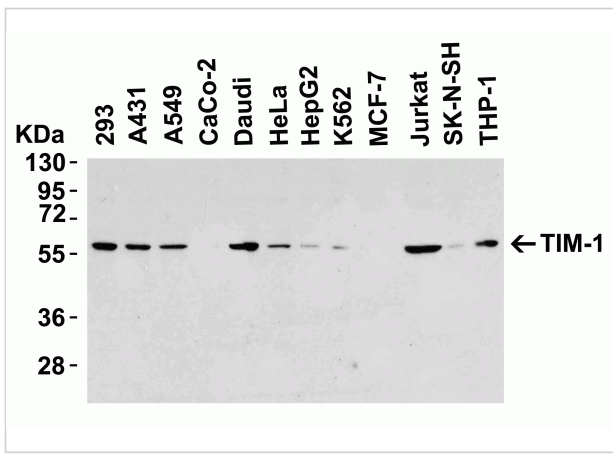
CATALOG NUMBER: 3809

Specifications

Host Species	Rabbit
Species Reactivity	Human, Mouse
Homology	Predicted species reactivity based on immunogen sequence: Rat: (56.3%)
Immunogen	Anti-TIM-1 antibody (3809) was raised against a peptide corresponding to 16 amino acids near the amino terminus of human TIM-1. The immunogen is located within amino acids 50 - 100 of TIM-1.
Conjugate	Unconjugated
Tested Applications	E, IF, IHC-P, WB
User Note	Optimal dilutions for each application to be determined by the researcher.
Predicted Molecular Weight	Predicted: 44kD Observed: 60kD (Post-modification: 4 N-linked glycosylation)

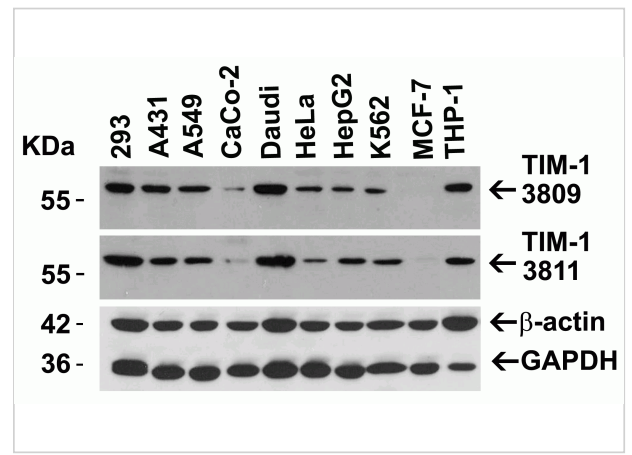
Properties

Purification	TIM-1 Antibody is affinity chromatography purified via peptide column.
Clonality	Polyclonal
Isotype	IgG
Physical State	Liquid
Buffer	TIM-1 Antibody is supplied in PBS containing 0.02% sodium azide.
Concentration	1 mg/mL
Storage Conditions	TIM-1 antibody can be stored at 4°C for three months and -20°C, stable for up to one year. As with all antibodies care should be taken to avoid repeated freeze thaw cycles. Antibodies should not be exposed to prolonged high temperatures.



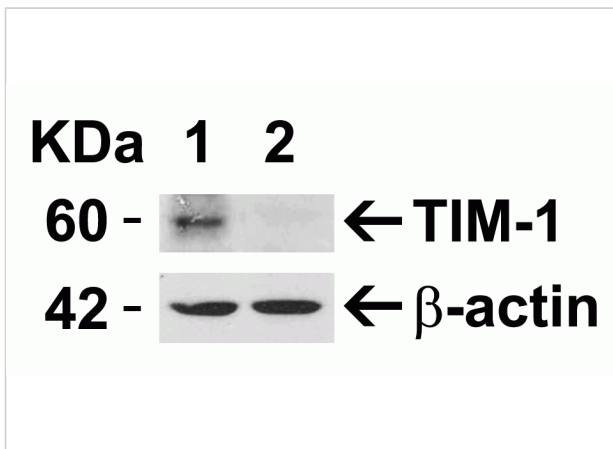
TIM-1 Antibody 1

Figure 1 Western Blot Validation in Human Cell Lines
 Loading: 15 µg of lysates per lane. Antibodies: TIM-1 3809 (8 µg/mL), overnight incubation at 4° C in 5% NFDm/TBST. Secondary:...



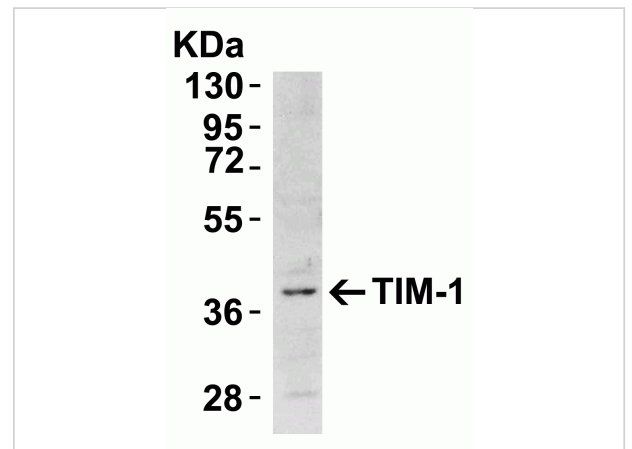
TIM-1 Antibody 2

Figure 2 Independent Antibody Validation (IAV) via Protein Expression Profile in Cell Lines
 Loading: 15 µg of lysates per lane. Antibodies: TIM-1 3809 (8 µg/mL), TIM-1 3811 (1 µg/...



TIM-1 Antibody 3

Figure 3 Validation with TIM-1 siRNA Knockdown in HeLa Cells
 HeLa cells were transfected with control siRNAs (lane 1) or TIM-1 siRNAs (lane 2) Loading: 15 µg of HeLa whole cell ...



TIM-1 Antibody 4

Figure 4 Western Blot Validation in the Mouse Cell Line
 Loading: 15 µg of NIH/3T3 cell lysates. Antibodies: TIM-1 3809 (8 µg/mL), overnight incubation at 4° C in 5% NFDm/TBST. Sec...

Disclaimer

Disclaimer	Optimal dilutions/concentrations should be determined by the end user. The information provided is a guideline for product use. This product is for research use only.
-------------------	--

For research use only. For additional information, visit ProSci's [Terms and Conditions Page](#).