

## Thymidylate Synthase Antibody [TS106]

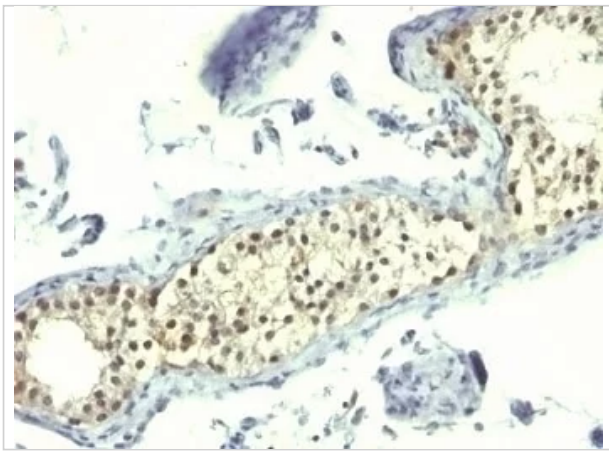
CATALOG NUMBER: 33-561

### Specifications

<b>Host Species</b>	Mouse
<b>Species Reactivity</b>	Human
<b>Immunogen</b>	Recombinant human protein was used as the immunogen for this Thymidylate Synthase antibody.
<b>Conjugate</b>	Unconjugated
<b>Tested Applications</b>	Flow, IF, IHC, WB
<b>User Note</b>	Optimal dilutions for each application to be determined by the researcher

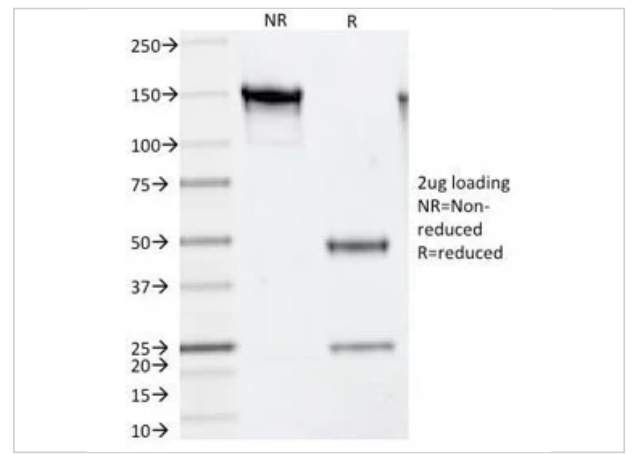
### Properties

<b>Purification</b>	Protein G affinity chromatography
<b>Clonality</b>	Monoclonal
<b>Isotype</b>	IgG1, kappa
<b>Physical State</b>	Liquid
<b>Buffer</b>	PBS with 0.1 mg/ml BSA and 0.05% sodium azide
<b>Concentration</b>	0.2 mg/mL
<b>Storage Conditions</b>	Aliquot and Store at 2-8°C. Avoid freeze-thaw cycles.



## Thymidylate Synthase Antibody [TS106] 1

Formalin-fixed, paraffin-embedded human testicular carcinoma stained with Thymidylate Synthase antibody (TS106).



## Thymidylate Synthase Antibody [TS106] 2

SDS-PAGE Analysis of Purified, BSA-Free Thymidylate Synthase Antibody (clone TS106). Confirmation of Integrity and Purity of the Antibody.

## Disclaimer

### Disclaimer

Optimal dilutions/concentrations should be determined by the end user. The information provided is a guideline for product use. This product is for research use only.

For research use only. For additional information, visit ProSci's [Terms and Conditions Page](#).