

TAPT1 Antibody

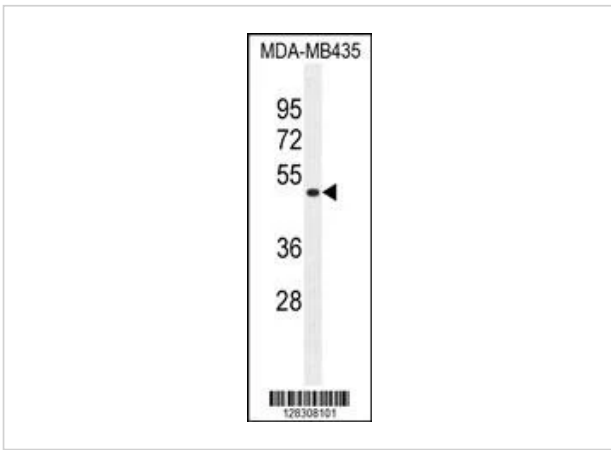
CATALOG NUMBER: 55-452

Specifications

Host Species	Rabbit
Species Reactivity	Human, Mouse
Homology	Predicted species reactivity based on immunogen sequence: Chicken
Immunogen	This TAPT1 antibody is generated from rabbits immunized with a KLH conjugated synthetic peptide between 530-558 amino acids from the C-terminal region of human TAPT1.
Conjugate	Unconjugated
Tested Applications	Flow, WB
User Note	Optimal dilutions for each application to be determined by the researcher.
Predicted Molecular Weight	64 kDa

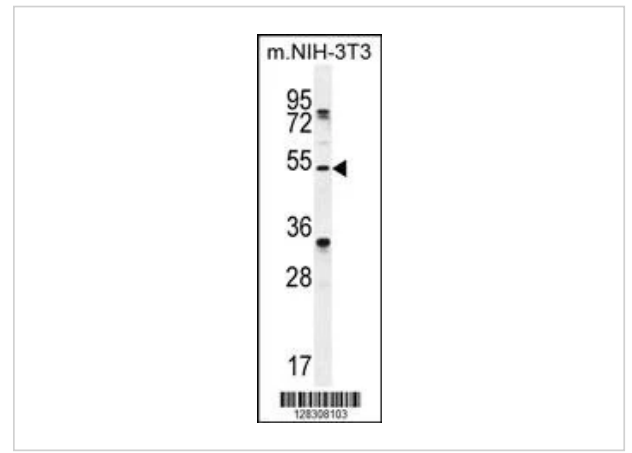
Properties

Purification	This antibody is purified through a protein A column, followed by peptide affinity purification.
Clonality	Polyclonal
Isotype	Rabbit Ig
Physical State	Liquid
Buffer	Supplied in PBS with 0.09% (W/V) sodium azide.
Concentration	batch dependent
Storage Conditions	Store at 4°C for three months and -20°C, stable for up to one year. As with all antibodies care should be taken to avoid repeated freeze thaw cycles. Antibodies should not be exposed to prolonged high temperatures.



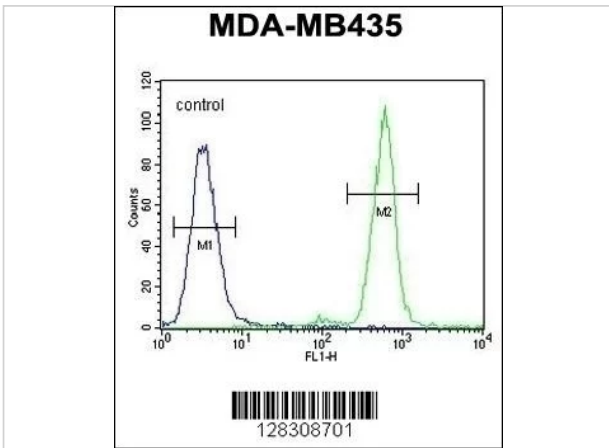
TAPT1 Antibody 1

Western blot analysis in MDA-MB435 cell line lysates (35ug/lane).



TAPT1 Antibody 2

Western blot analysis in mouse NIH-3T3 cell line lysates (35ug/lane).



TAPT1 Antibody 3

Flow cytometric analysis of MDA-MB435 cells (right histogram) compared to a negative control cell (left histogram). FITC-conjugated goat-anti-rabbit secondary antibodies were used for the analysis.

Disclaimer

Disclaimer

Optimal dilutions/concentrations should be determined by the end user. The information provided is a guideline for product use. This product is for research use only.

For research use only. For additional information, visit ProSci's [Terms and Conditions Page](#).