



ProSci Incorporated
12170 Flint Place
Poway, CA 92064, USA
prosci-inc.com

P: +1 (888) 513-9525
Local: +1 (858) 513-2638
Fax: +1 (858) 513-2692

customercare@prosci-inc.com
techsupport@prosci-inc.com

Slitrk5 Peptide

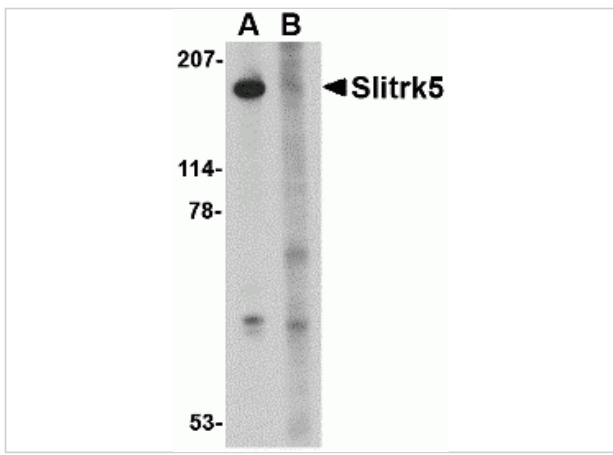
CATALOG NUMBER: 4477P

Specifications

| | |
|----------------------------|-------|
| Species | Human |
| Tested Applications | Bl |

Properties

| | |
|---------------------------|--|
| Physical State | Liquid |
| Buffer | PBS pH 7.2 (10 mM NaH ₂ PO ₄ , 10 mM Na ₂ HPO ₄ , 130 mM NaCl) containing 0.1% bovine serum albumin and 0.02% sodium azide |
| Concentration | 200 ug/mL |
| Storage Conditions | Store Slitrk5 peptide at -20°C, stable for one year. |



Slitrk5 Peptide 1

Western blot analysis of Slitrk5 in 3T3 cell lysate with Slitrk5 antibody at 1 $\mu\text{g/mL}$ in the (A) absence or (B) presence of blocking peptide.

Disclaimer

Disclaimer

This product is for research use only.

For research use only. For additional information, visit ProSci's [Terms and Conditions Page](#).