

SLC22A1 Antibody

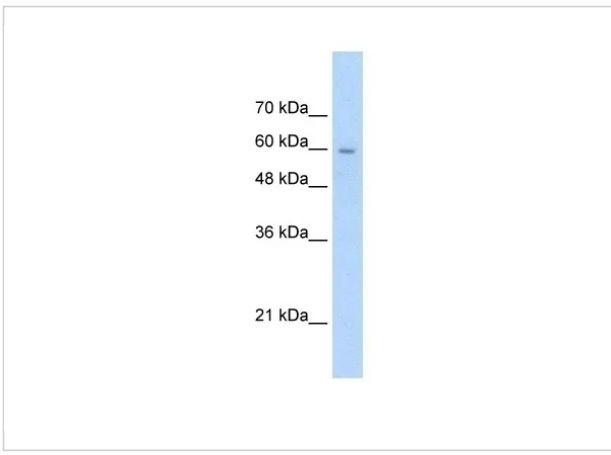
CATALOG NUMBER: 29-592

Specifications

Host Species	Rabbit
Species Reactivity	Dog, Human, Mouse, Rat
Immunogen	Antibody produced in rabbits immunized with a synthetic peptide corresponding a region of human SLC22A1.
Conjugate	Unconjugated
Tested Applications	E, IHC, WB
User Note	Optimal dilutions for each application to be determined by the researcher.
Predicted Molecular Weight	61 kDa, 56 kDa

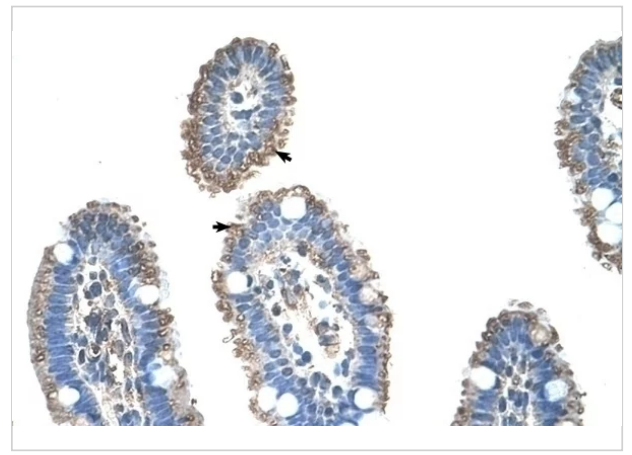
Properties

Purification	Antibody is purified by protein A chromatography method.
Clonality	Polyclonal
Physical State	Liquid
Buffer	Purified antibody supplied in 1x PBS buffer with 0.09% (w/v) sodium azide and 2% sucrose.
Concentration	batch dependent
Storage Conditions	For short periods of storage (days) store at 4°C. For longer periods of storage, store SLC22A1 antibody at -20°C. As with any antibody avoid repeat freeze-thaw cycles.



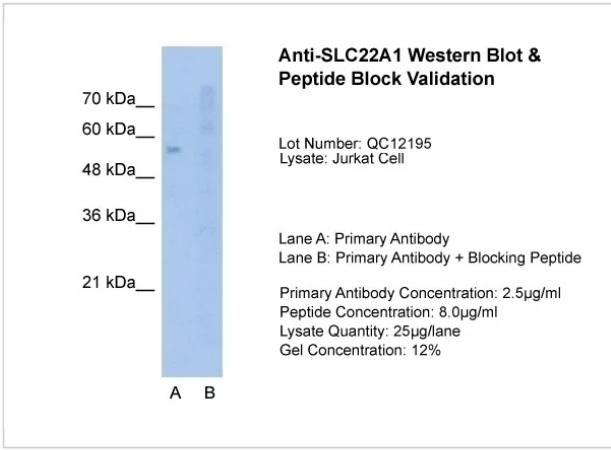
SLC22A1 Antibody 1

Antibody used in WB on Human Jurkat 2.5 ug/ml.



SLC22A1 Antibody 2

Antibody used in IHC on Human Intestine at 4.0-8.0 ug/ml.



SLC22A1 Antibody 3

Antibody used in WB on Jurkat 2.5 ug/ml (Lane A: Primary Antibody and Lane B: Primary Antibody + Blocking Peptide).

Disclaimer

Disclaimer	This product is for research use only.
-------------------	--

For research use only. For additional information, visit ProSci's [Terms and Conditions Page](#).