

## SARS-COV-2 Nucleocapsid Protein Antibody [9A4B3]

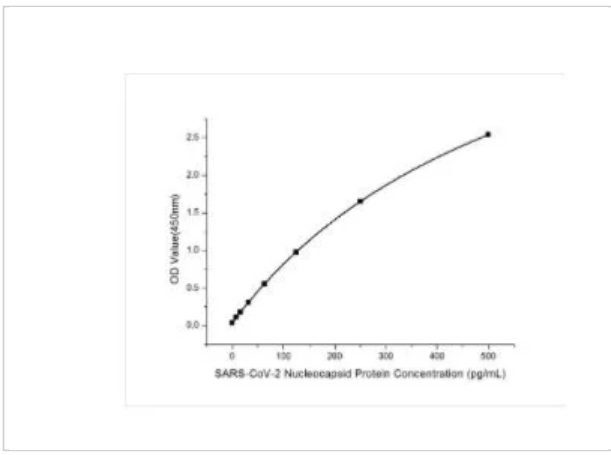
CATALOG NUMBER: 24-037

### Specifications

<b>Host Species</b>	Rabbit
<b>Species Reactivity</b>	Virus
<b>Immunogen</b>	E.coli derived SARS-COV-2 Nucleoproteins Ser2-Ala419Gly335Ala Accession #QHD43423.2
<b>Conjugate</b>	Unconjugated
<b>Tested Applications</b>	E
<b>User Note</b>	Optimal dilutions for each application to be determined by the researcher.
<b>Specificity</b>	SARS-COV-2

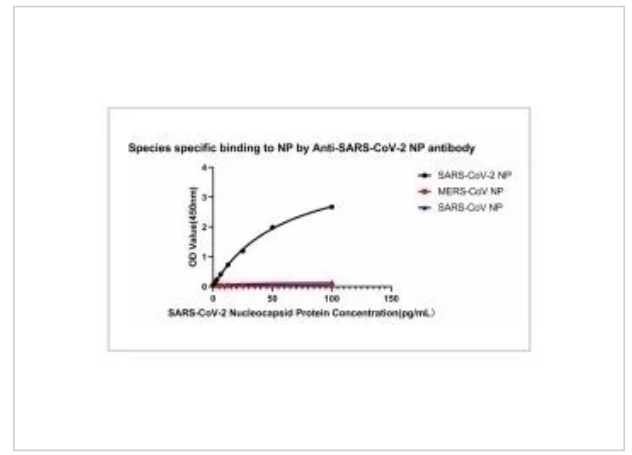
### Properties

<b>Purification</b>	Affinity purification  < 1.0 EU/ug of the protein by LAL method.
<b>Clonality</b>	Recombinant Monoclonal
<b>Isotype</b>	Rabbit IgG
<b>Physical State</b>	Lyophilized
<b>Buffer</b>	Lyophilized from a 0.2 um filtered solution in PBS, pH7.4 with antibody at a final concentration of 1 mg/ml.
<b>Concentration</b>	1 mg/ml
<b>Storage Conditions</b>	2°C - 8°C for one month, -20°C to -80°C for one year. Avoid repeated freeze-thaw cycles



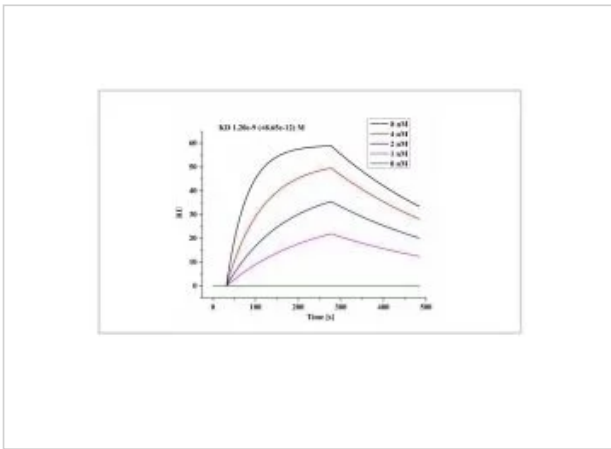
## SARS-COV-2 Nucleocapsid Protein Antibody [9A4B3] 1

This standard curve is only for demonstration purposes. A standard curve should be generated for each assay.



## SARS-COV-2 Nucleocapsid Protein Antibody [9A4B3] 2

No cross-reactivity in ELISA with MERS-CoV Nucleoprotein protein and SARS Coronavirus Nucleocapsid.



## SARS-COV-2 Nucleocapsid Protein Antibody [9A4B3] 3

Recombinant SARS-CoV-2 Nucleocapsid Protein, captured on COOH chip can bind SARS-CoV-2 Nucleocapsid Protein AntibodyCAPCat. No. RM17574 with an affinity constant of 1.20 nM as determined in a LSPR ...

## Disclaimer

<b>Disclaimer</b>	Optimal dilutions/concentrations should be determined by the end user. The information provided is a guideline for product use. This product is for research use only.
-------------------	--

For research use only. For additional information, visit ProSci's [Terms and Conditions Page](#).