

SARS-CoV-2 (COVID-19) ORF8 protein polyclonal antibody

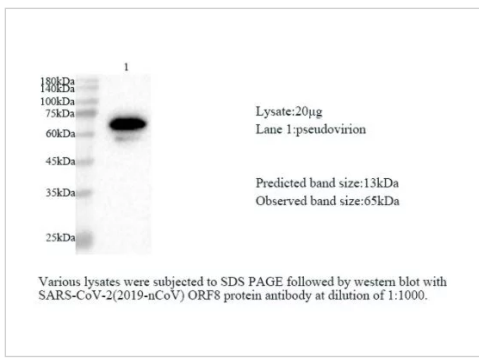
CATALOG NUMBER: 11-049

Specifications

Host Species	Rabbit
Species Reactivity	Virus
Immunogen	MKFLVFLGIITVAAFHQECSLQSQCTQHQPVVDDPCPIHFYSKWYIRVGARKSAPLIELCVDEAGSKSPIQYIDIGNYTVSCLPFTINCQEPKLGSLVVRCSFYEDFLEYHDV
Conjugate	Unconjugated
Tested Applications	E
User Note	Optimal dilutions for each application to be determined by the researcher.
Specificity	Recognizes SARS-CoV-2 ORF8 protein

Properties

Clonality	Polyclonal
Isotype	IgG
Physical State	Liquid
Buffer	PBS, pH7.4, containing 0.05% proclin300, 50% glycerol.
Concentration	batch dependent
Storage Conditions	Use a manual defrost freezer and avoid repeated freeze thaw cycles. Store at 2 to 8 °C for one week. Store at -20 to -80 °C for twelve months from the date of receipt.



SARS-CoV-2 (COVID-19) ORF8 protein polyclonal antibody 1

Various lysates were subjected to SDS-PAGE followed by western blot with SARS-CoV-2 (2019-nCoV) ORF8 Protein antibody at dilution of 1:1000

Disclaimer

Disclaimer

Optimal dilutions/concentrations should be determined by the end user. The information provided is a guideline for product use. Optimal dilutions/concentrations should be determined by the end user. The information provided is a guideline for product use. This product is for research use only.

For research use only. For additional information, visit ProSci's [Terms and Conditions Page](#).