



ProSci Incorporated
12170 Flint Place
Poway, CA 92064, USA
prosci-inc.com

P: +1 (888) 513-9525
Local: +1 (858) 513-2638
Fax: +1 (858) 513-2692

customercare@prosci-inc.com
techsupport@prosci-inc.com

SARS-CoV-2 (COVID-19) Omicron Variant Spike S1 (His-Avi Tag) Recombinant Protein

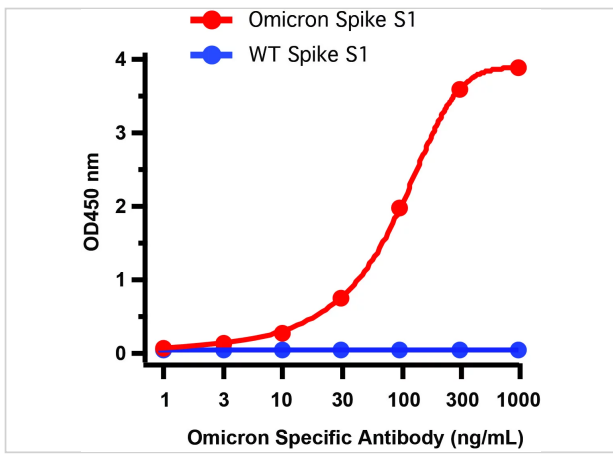
CATALOG NUMBER: 95-129

Specifications

Species	SARS-CoV-2 (COVID-19, 2019-nCoV) Spike Protein
Source Species	HEK293 cells
Fusion Tag	His-Avi tag at C-terminus
Tested Applications	E, SDS-PAGE, WB
Predicted Molecular Weight	120 kD

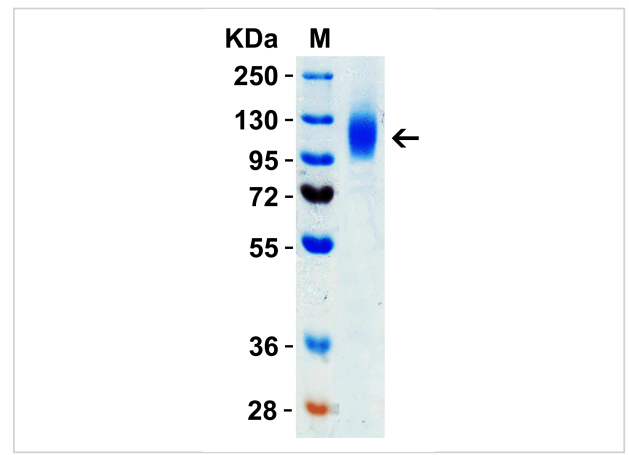
Properties

Purity	> 90% as determined by Bis-Tris PAGE
Physical State	Liquid
Buffer	PBS (pH 7.4).
Storage Conditions	Store in working aliquots at -70°C. Avoid freeze/thaw cycles. When working with proteins care should be taken to keep recombinant protein at a cool and stable temperature.



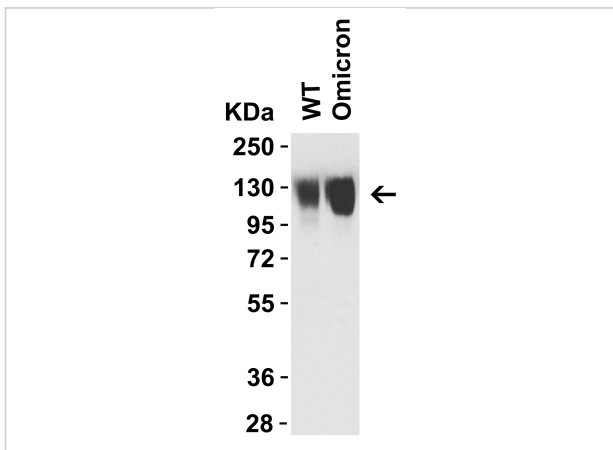
SARS-CoV-2 (COVID-19) Omicron Variant Spike S1 (His-Avi Tag) Recombinant Protein 1

Figure 1 ELISA Validation of Omicron Variant Spike S1 Protein with SARS-CoV-2 Omicron Variant Spike Antibodies
Coating Antigen: SARS-CoV-2 spike S1 proteins, including WT and O...



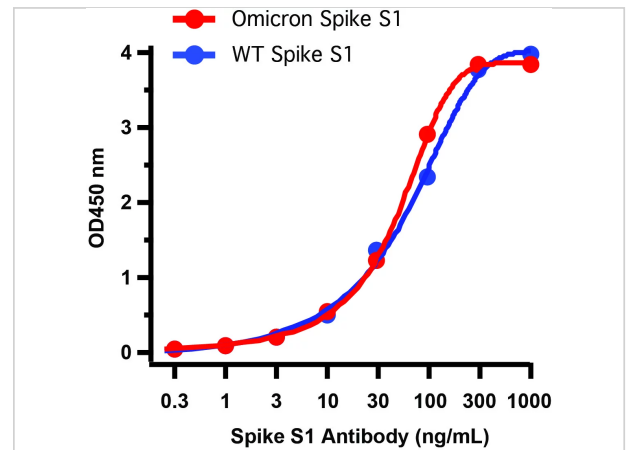
SARS-CoV-2 (COVID-19) Omicron Variant Spike S1 (His-Avi Tag) Recombinant Protein 2

Figure 2 SDS-PAGE Validation of SARS-CoV-2 (COVID-19) Omicron Variant Spike S1 Recombinant Protein
Loading: 2 µg SARS-CoV-2 (COVID-19) Omicron variant Spike S1 recombinant prot...



SARS-CoV-2 (COVID-19) Omicron Variant Spike S1 (His-Avi Tag) Recombinant Protein 3

Figure 3 WB Validation of Omicron Variant Spike S1 Protein with SARS-CoV-2 Spike Antibodies
Loading: 30 ng of SARS-CoV-2 spike S1 proteins, including WT and Omicron variant (B....



SARS-CoV-2 (COVID-19) Omicron Variant Spike S1 (His-Avi Tag) Recombinant Protein 4

Figure 4 ELISA Validation of Omicron Variant Spike S1 Protein with SARS-CoV-2 Spike S1 Antibodies
Coating Antigen: SARS-CoV-2 spike S1 proteins, including WT and Omicron varian...

Disclaimer

Disclaimer

Products are intended for laboratory research purposes only and should be used by qualified personnel only. They are not intended for use in humans. ProSci is not liable for damages or injuries resulting from receipt and/or use of ProSci materials. Please refer to the Material Safety Data Sheet (MSDS) for safe storage, handling, and use procedures.

For research use only. For additional information, visit ProSci's [Terms and Conditions Page](#).