

## RNF25 Antibody

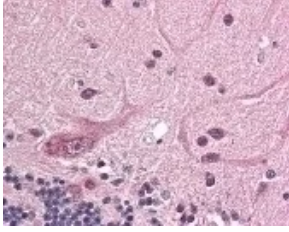
CATALOG NUMBER: 49-480

### Specifications

<b>Host Species</b>	Rabbit
<b>Species Reactivity</b>	Human, Mouse
<b>Immunogen</b>	RNF25 antibody was raised against amino acids 1 - 363 of RNF25 (Human) around the carboxy terminal.
<b>Conjugate</b>	Unconjugated
<b>Tested Applications</b>	E, IHC, IP, WB
<b>User Note</b>	Optimal dilutions for each application to be determined by the researcher.

### Properties

<b>Purification</b>	Immunoaffinity Chromatography
<b>Clonality</b>	Polyclonal
<b>Physical State</b>	Liquid
<b>Buffer</b>	0.02 M potassium phosphate, 0.15 M sodium chloride, pH 7.2, 0.01% sodium azide.
<b>Concentration</b>	1 mg/ml
<b>Storage Conditions</b>	Store RNF25 antibody at 4 °C or -20 °C. As with all antibodies avoid freeze/thaw cycles.



## RNF25 Antibody 1

Immunohistochemistry staining of RNF25 in cerebellum tissue using RNF25 Antibody.

## Disclaimer

---

<b>Disclaimer</b>	This product is for research use only.
-------------------	--

For research use only. For additional information, visit ProSci's [Terms and Conditions Page](#).