

## PSMG2 Antibody

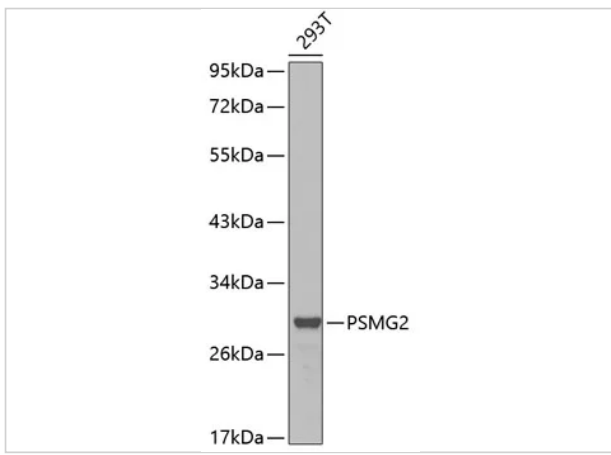
CATALOG NUMBER: 13-244

### Specifications

<b>Host Species</b>	Rabbit
<b>Species Reactivity</b>	Human, Mouse, Rat
<b>Immunogen</b>	Recombinant fusion protein containing a sequence corresponding to amino acids 1-264 of human PSMG2 (NP_064617.2).
<b>Conjugate</b>	Unconjugated
<b>Tested Applications</b>	WB
<b>User Note</b>	Optimal dilutions for each application to be determined by the researcher.
<b>Predicted Molecular Weight</b>	Observed: 29kDa

### Properties

<b>Purification</b>	Affinity purification
<b>Clonality</b>	Polyclonal
<b>Isotype</b>	IgG
<b>Physical State</b>	Liquid
<b>Buffer</b>	PBS with 0.02% sodium azide, 50% glycerol, pH7.3.
<b>Concentration</b>	batch dependent
<b>Storage Conditions</b>	Store at -20°C. Avoid freeze / thaw cycles.



## PSMG2 Antibody 1

Western blot analysis of extracts of 293T cells, using PSMG2 antibody (13-244).  
Secondary antibody: HRP Goat Anti-Rabbit IgG (H+L) at 1:10000 dilution.  
Lysates/proteins: 25ug per lane.  
...

## Disclaimer

### Disclaimer

Optimal dilutions/concentrations should be determined by the end user. The information provided is a guideline for product use. This product is for research use only.

For research use only. For additional information, visit ProSci's [Terms and Conditions Page](#).