

PRPH Antibody

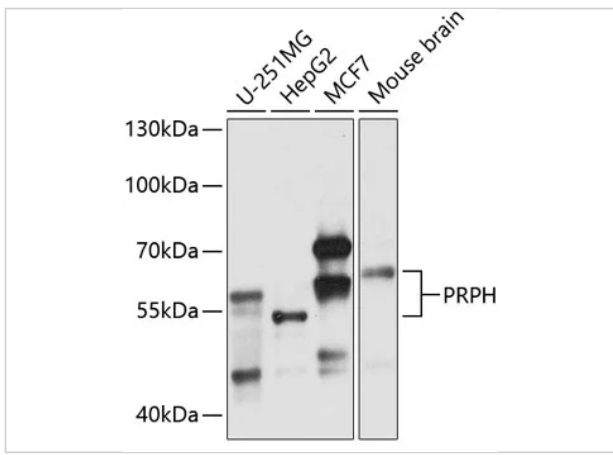
CATALOG NUMBER: 19-256

Specifications

Host Species	Rabbit
Species Reactivity	Human, Mouse, Rat
Immunogen	Recombinant fusion protein containing a sequence corresponding to amino acids 1-260 of human PRPH (NP_006253.2).
Conjugate	Unconjugated
Tested Applications	IHC, WB
User Note	Optimal dilutions for each application to be determined by the researcher.
Predicted Molecular Weight	Observed: 54-62kDa

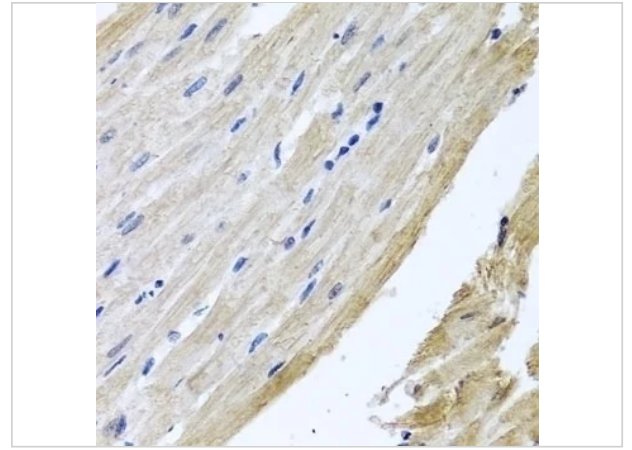
Properties

Purification	Affinity purification
Clonality	Polyclonal
Isotype	IgG
Physical State	Liquid
Buffer	PBS with 0.02% sodium azide, 50% glycerol, pH7.3.
Concentration	batch dependent
Storage Conditions	Store at -20°C. Avoid freeze / thaw cycles.



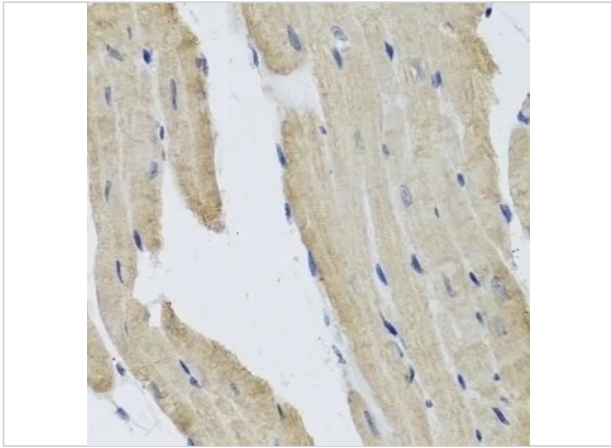
PRPH Antibody 1

Western blot analysis of extracts of various cell lines, using PRPH antibody (19-256) at 1:1000 dilution. Secondary antibody: HRP Goat Anti-Rabbit IgG (H+L) at 1:10000 dilution. Lysates/pro...



PRPH Antibody 2

Immunohistochemistry of paraffin-embedded rat heart using PRPH antibody (19-256) at dilution of 1:100 (40x lens).



PRPH Antibody 3

Immunohistochemistry of paraffin-embedded mouse heart using PRPH antibody (19-256) at dilution of 1:100 (40x lens).

Disclaimer

Disclaimer

Optimal dilutions/concentrations should be determined by the end user. The information provided is a guideline for product use. This product is for research use only.

For research use only. For additional information, visit ProSci's [Terms and Conditions Page](#).