

PROX1 Antibody

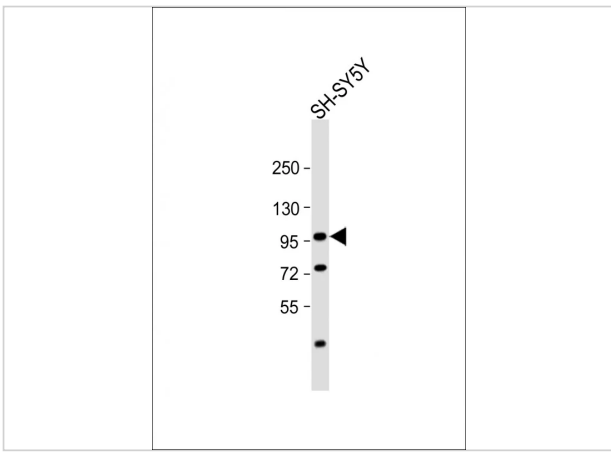
CATALOG NUMBER: 60-970

Specifications

Host Species	Rabbit
Species Reactivity	Human
Homology	Predicted species reactivity based on immunogen sequence: Chicken
Immunogen	This PROX1 antibody is generated from rabbits immunized with a KLH conjugated synthetic peptide between 144-175 amino acids from the N-terminal region of human PROX1.
Conjugate	Unconjugated
Tested Applications	WB
User Note	Optimal dilutions for each application to be determined by the researcher.
Predicted Molecular Weight	83 kDa

Properties

Purification	This antibody is prepared by Saturated Ammonium Sulfate (SAS) precipitation followed by dialysis
Clonality	Polyclonal
Isotype	Rabbit Ig
Physical State	Liquid
Buffer	Supplied in PBS with 0.09% (W/V) sodium azide.
Concentration	batch dependent
Storage Conditions	Store at 4°C for three months and -20°C, stable for up to one year. As with all antibodies care should be taken to avoid repeated freeze thaw cycles. Antibodies should not be exposed to prolonged high temperatures.



PROX1 Antibody 1

Western Blot at 1:1000 dilution + SH-SY5Y whole cell lysate
Lysates/proteins at 20 ug per lane.

Disclaimer

Disclaimer

Optimal dilutions/concentrations should be determined by the end user. The information provided is a guideline for product use. This product is for research use only.

For research use only. For additional information, visit ProSci's [Terms and Conditions Page](#).