

## PPP1R1A Antibody

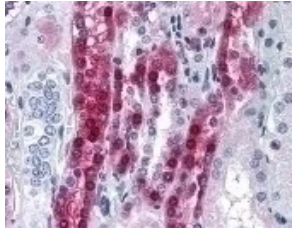
CATALOG NUMBER: 48-938

### Specifications

<b>Host Species</b>	Rabbit
<b>Species Reactivity</b>	Bovine, Chimpanzee, Dog, Frog, Horse, Human, Monkey, Mouse, Rat
<b>Immunogen</b>	A portion of amino acids 50-100 of human IPP-1.
<b>Conjugate</b>	Unconjugated
<b>Tested Applications</b>	IHC, WB
<b>User Note</b>	Optimal dilutions for each application to be determined by the researcher.
<b>Specificity</b>	A portion of amino acids 50-100 of human IPP-1.

### Properties

<b>Purification</b>	Immunoaffinity Chromatography
<b>Clonality</b>	Polyclonal
<b>Physical State</b>	Liquid
<b>Buffer</b>	PBS, 0.2% gelatin, 0.05% sodium azide.
<b>Concentration</b>	0.5 mg/ml
<b>Storage Conditions</b>	PPP1R1A antibody can be stored short term 4 °C. For long term storage aliquot and store at -20 °C. As with all antibodies avoid freeze/thaw cycles.



## PPP1R1A Antibody 1

Immunohistochemistry staining of PPP1R1A in kidney tissue using PPP1R1A Antibody.

## Disclaimer

---

<b>Disclaimer</b>	This product is for research use only.
-------------------	--

For research use only. For additional information, visit ProSci's [Terms and Conditions Page](#).