

PKD / PKCmu (phospho Ser738) Antibody

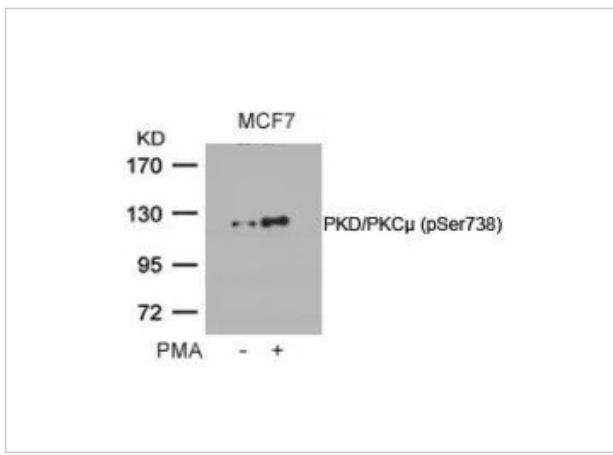
CATALOG NUMBER: 79-444

Specifications

Host Species	Rabbit
Species Reactivity	Human, Mouse, Rat
Immunogen	PKD/PKCmu (Phospho-Ser738) antibody was raised against a peptide sequence around phosphorylation site of serine 738 (E-K-S (p) -F-R) derived from Human PKD/PKCμ.
Conjugate	Unconjugated
Tested Applications	IF, WB
Specificity	This antibody detects endogenous level of PKD/PKCmu only when phosphorylated at serine 738.
Predicted Molecular Weight	115 kDa

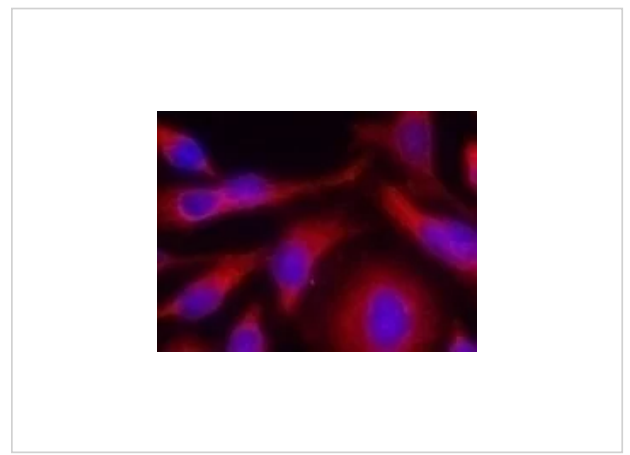
Properties

Purification	Antibodies were purified by affinity-chromatography using epitope-specific phosphopeptide. Non-phospho specific antibodies were removed by chromatography using non-phosphopeptide.
Clonality	Polyclonal
Physical State	Liquid
Buffer	Antibody supplied in phosphate buffered saline (without Mg ²⁺ and Ca ²⁺), pH 7.4, 150mM NaCl, 0.02% sodium azide and 50% glycerol.
Concentration	1 mg/mL
Storage Conditions	Store antibody at -20°C for up to one year.



PKD / PKCmu (phospho Ser738) Antibody 1

Western blot analysis of lysed extracts from MCF cells untreated or treated with PMA using PKD/PKCμ (Phospho-Ser738).



PKD / PKCmu (phospho Ser738) Antibody 2

Immunofluorescence staining of methanol-fixed HeLa cells using PKD/PKCμ (Phospho-Ser738).

Disclaimer

Disclaimer

Optimal dilutions/concentrations should be determined by the end user. The information provided is a guideline for product use. This product is for research use only.

For research use only. For additional information, visit ProSci's [Terms and Conditions Page](#).