

## PD-L2 Antibody

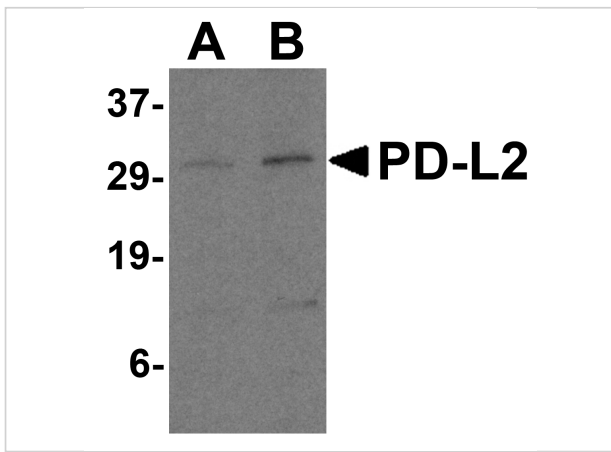
CATALOG NUMBER: 4063

### Specifications

<b>Host Species</b>	Rabbit
<b>Species Reactivity</b>	Human, Mouse
<b>Homology</b>	Predicted species reactivity based on immunogen sequence: rat (94%).
<b>Immunogen</b>	Anti-PD-L2 antibody (<strong>4063</strong>) was raised against a peptide corresponding to 16 amino acids near the center of human PD-L2.  The immunogen is located within amino acids 140-190 of PD-L2.
<b>Conjugate</b>	Unconjugated
<b>Tested Applications</b>	E, IF, IHC-P, WB
<b>User Note</b>	Optimal dilutions for each application to be determined by the researcher.
<b>Predicted Molecular Weight</b>	Predicted: 31kD Observed: 29 kD

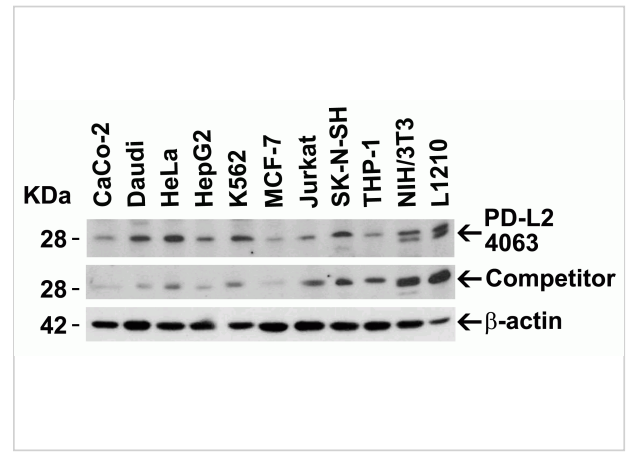
### Properties

<b>Purification</b>	PD-L2 Antibody is affinity chromatography purified via peptide column.
<b>Clonality</b>	Polyclonal
<b>Isotype</b>	IgG
<b>Physical State</b>	Liquid
<b>Buffer</b>	PD-L2 Antibody is supplied in PBS containing 0.02% sodium azide.
<b>Concentration</b>	1 mg/mL
<b>Storage Conditions</b>	PD-L2 antibody can be stored at 4°C for three months and -20°C, stable for up to one year. As with all antibodies care should be taken to avoid repeated freeze thaw cycles. Antibodies should not be exposed to prolonged high temperatures.



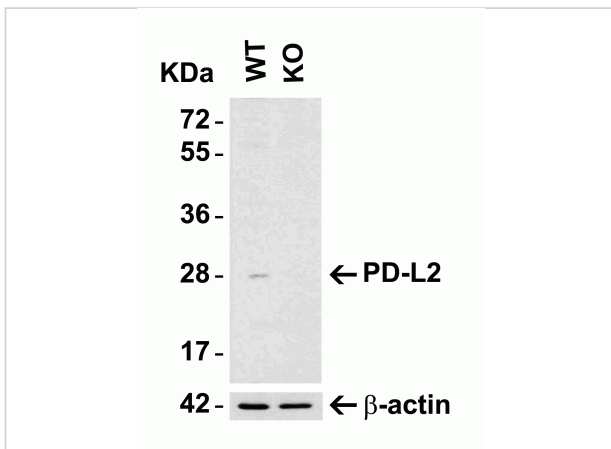
### PD-L2 Antibody 1

**Figure 1 Western Blot Validation in Human Raji Cell Lysate**  
 Loading: 15 µg of lysates per lane. Antibodies: PD-L2 4063 (A: 0.5 µg/mL and B: 1 µg/mL), 1h incubation at RT in 5% NFD...



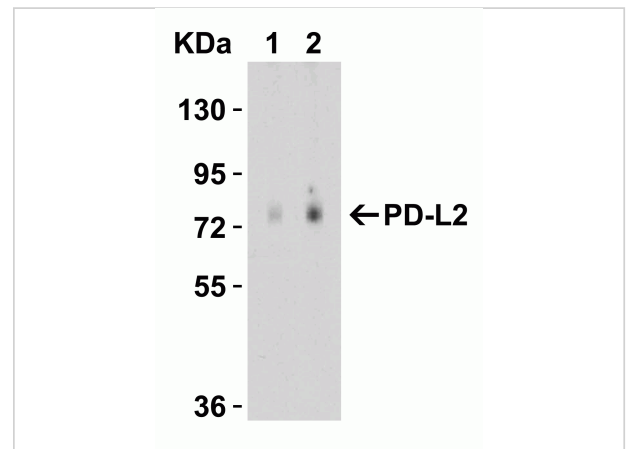
### PD-L2 Antibody 2

**Figure 2 Independent Antibody Validation (IAV) via Protein Expression Profile in Human and Mouse Cell Lines**  
 Loading: 15 µg of lysates per lane. Antibodies: PD-L2, 4063 (4 µg/mL),...



### PD-L2 Antibody 3

**Figure 3 KO Validation in HeLa Cells**  
 Loading: 15 µg of HeLa WT cell lysates or PD-L2 KO cell lysates. Antibodies: PD-L2, 4063 (4 µg/mL) and beta-actin 3779 (1 µg/mL), 1 h incu...



### PD-L2 Antibody 4

**Figure 3 KO Validation in HeLa Cells**  
 Loading: 15 µg of HeLa WT cell lysates or PD-L2 KO cell lysates. Antibodies: PD-L2, 4063 (4 µg/mL) and beta-actin 3779 (1 µg/mL), 1 h incu...

## Disclaimer

<b>Disclaimer</b>	Optimal dilutions/concentrations should be determined by the end user. The information provided is a guideline for product use. This product is for research use only.
-------------------	--

For research use only. For additional information, visit ProSci's [Terms and Conditions Page](#).