

P Glycoprotein Antibody

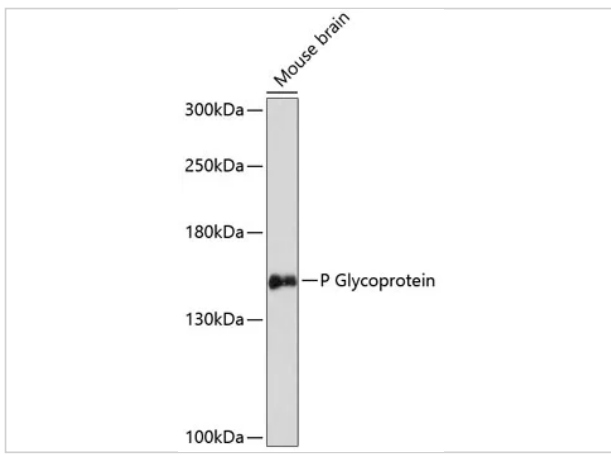
CATALOG NUMBER: 15-715

Specifications

Host Species	Rabbit
Species Reactivity	Mouse, Rat
Immunogen	A synthetic peptide corresponding to a sequence within amino acids 600-700 of human P Glycoprotein (NP_000918.2).
Conjugate	Unconjugated
Tested Applications	IF, IHC, WB
User Note	Optimal dilutions for each application to be determined by the researcher.
Predicted Molecular Weight	Observed: 150kDa

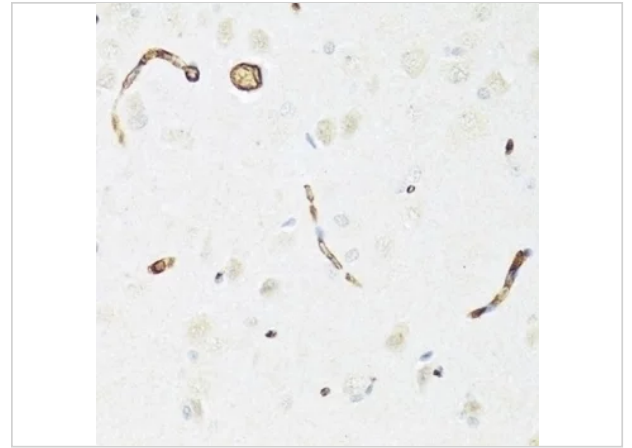
Properties

Purification	Affinity purification
Clonality	Polyclonal
Isotype	IgG
Physical State	Liquid
Buffer	PBS with 0.02% sodium azide, 50% glycerol, pH7.3.
Concentration	batch dependent
Storage Conditions	Store at -20°C. Avoid freeze / thaw cycles.



P Glycoprotein Antibody 1

Western blot analysis of extracts of mouse brain, using P Glycoprotein antibody (15-715) at 1:3000 dilution. Secondary antibody: HRP Goat Anti-Rabbit IgG (H+L) at 1:10000 dilution. Lysates/...



P Glycoprotein Antibody 2

Immunohistochemistry of paraffin-embedded rat brain using P Glycoprotein antibody (15-715) at dilution of 1:100 (40x lens).

Disclaimer

Disclaimer	Optimal dilutions/concentrations should be determined by the end user. The information provided is a guideline for product use. This product is for research use only.
-------------------	--

For research use only. For additional information, visit ProSci's [Terms and Conditions Page](#).