

NISCH Antibody

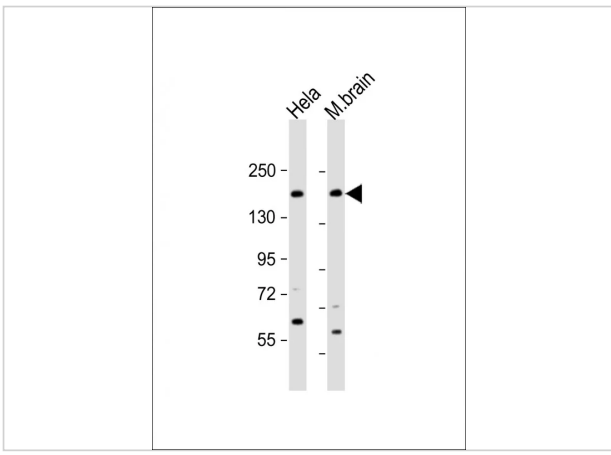
CATALOG NUMBER: 61-350

Specifications

Host Species	Rabbit
Species Reactivity	Human, Mouse
Immunogen	This NISCH antibody is generated from a rabbit immunized with a KLH conjugated synthetic peptide between 5-38 amino acids from human NISCH.
Conjugate	Unconjugated
Tested Applications	WB
User Note	Optimal dilutions for each application to be determined by the researcher.
Predicted Molecular Weight	167 kDa

Properties

Purification	This antibody is purified through a protein A column, followed by peptide affinity purification.
Clonality	Polyclonal
Isotype	Rabbit Ig
Physical State	Liquid
Buffer	Supplied in PBS with 0.09% (W/V) sodium azide.
Concentration	batch dependent
Storage Conditions	Store at 4°C for three months and -20°C, stable for up to one year. As with all antibodies care should be taken to avoid repeated freeze thaw cycles. Antibodies should not be exposed to prolonged high temperatures.



NISCH Antibody 1

Western Blot at 1:2000 dilution Lane 1: HeLa whole cell lysate
Lane 2: mouse brain lysate Lysates/proteins at 20 ug per lane.

Disclaimer

Disclaimer

Optimal dilutions/concentrations should be determined by the end user. The information provided is a guideline for product use. This product is for research use only.

For research use only. For additional information, visit ProSci's [Terms and Conditions Page](#).