



ProSci Incorporated
12170 Flint Place
Poway, CA 92064, USA
prosci-inc.com

P: +1 (888) 513-9525
Local: +1 (858) 513-2638
Fax: +1 (858) 513-2692

customercare@prosci-inc.com
techsupport@prosci-inc.com

MTHFD2 Recombinant Protein

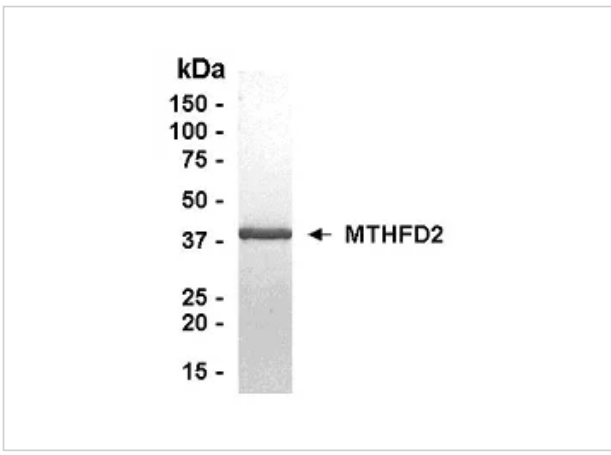
CATALOG NUMBER: XW-RP3155

Specifications

Species	Human
Source Species	E. coli
Tested Applications	E, MS, WB
Predicted Molecular Weight	39.56 kDa (Calculated)

Properties

Purity	>95%
Physical State	Liquid
Buffer	10 mM Tris, pH 8.0, 0.1% Triton X-100, 0.002% NaN ₃
Storage Conditions	Store in working aliquots at -70°C. Avoid freeze/thaw cycles. When working with proteins care should be taken to keep recombinant protein at a cool and stable temperature.



MTHFD2 Recombinant Protein 1

SDS PAGE: Analysis of MTHFD2 Recombinant Protein. 4-20% SDS gradient gel. Coomassie blue staining.

Disclaimer

Disclaimer	For research use only.
-------------------	------------------------

For research use only. For additional information, visit ProSci's [Terms and Conditions Page](#).