

MSX1 Antibody

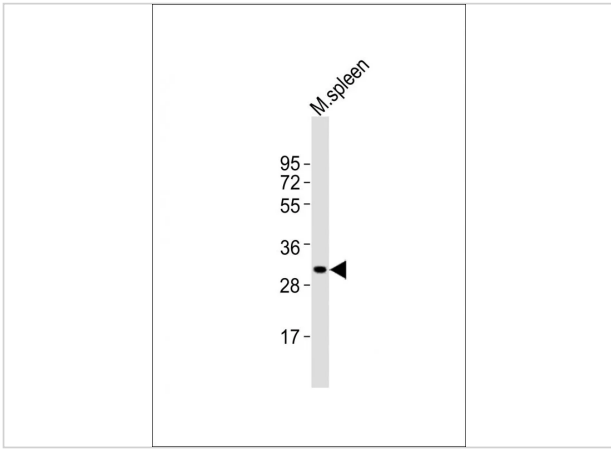
CATALOG NUMBER: 60-419

Specifications

Host Species	Rabbit
Species Reactivity	Human, Mouse
Homology	Predicted species reactivity based on immunogen sequence: Bovine
Immunogen	This MSX1 antibody is generated from rabbits immunized with a KLH conjugated synthetic peptide between 111-138 amino acids from the Central region of human MSX1.
Conjugate	Unconjugated
Tested Applications	IF, WB
User Note	Optimal dilutions for each application to be determined by the researcher.
Predicted Molecular Weight	31 kDa

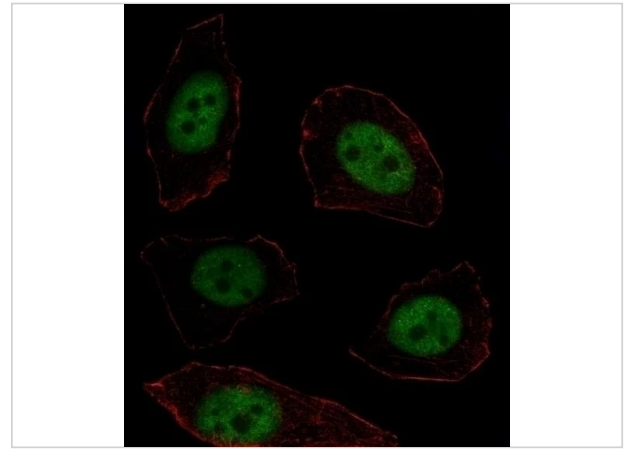
Properties

Purification	This antibody is purified through a protein A column, followed by peptide affinity purification.
Clonality	Polyclonal
Isotype	Rabbit Ig
Physical State	Liquid
Buffer	Supplied in PBS with 0.09% (W/V) sodium azide.
Concentration	batch dependent
Storage Conditions	Store at 4°C for three months and -20°C, stable for up to one year. As with all antibodies care should be taken to avoid repeated freeze thaw cycles. Antibodies should not be exposed to prolonged high temperatures.



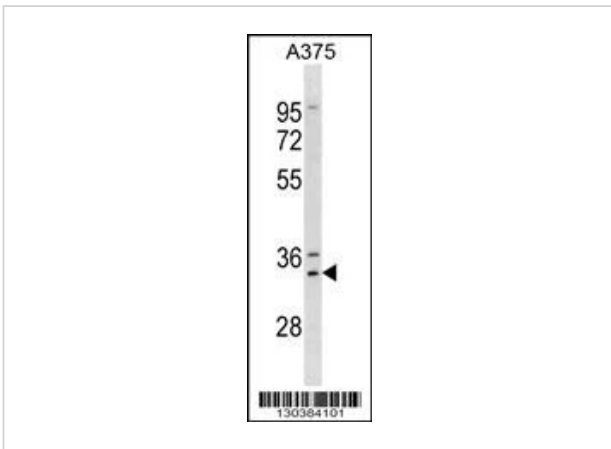
MSX1 Antibody 1

Western Blot at 1:2000 dilution + mouse spleen lysates
Lysates/proteins at 20 ug per lane.



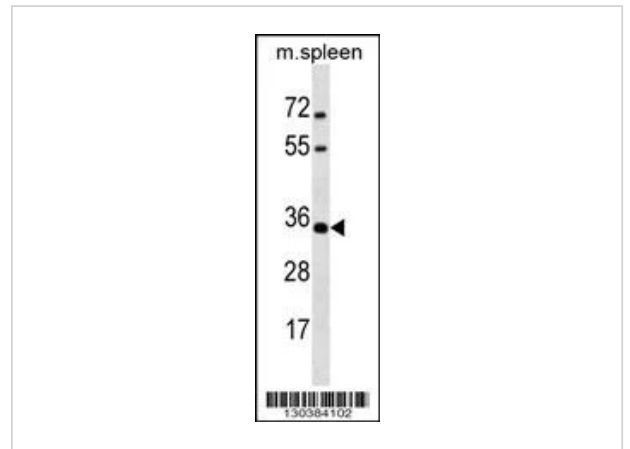
MSX1 Antibody 2

Fluorescent image of U251 cell stained with MSX1 Antibody .U251 cells were fixed with 4% PFA (20 min), permeabilized with Triton X-100 (0.1%, 10 min), then incubated with MSX1 primary antibody (1:2...



MSX1 Antibody 3

Western blot analysis in A375 cell line lysates (35ug/lane).



MSX1 Antibody 4

Western blot analysis in mouse spleen tissue lysates (35ug/lane).

Disclaimer

Disclaimer

Optimal dilutions/concentrations should be determined by the end user. The information provided is a guideline for product use. This product is for research use only.

For research use only. For additional information, visit ProSci's [Terms and Conditions Page](#).