

## Metastasis Suppressor 1 Antibody

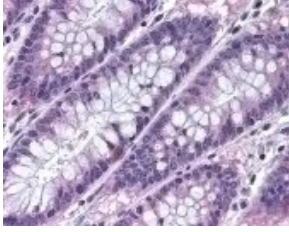
CATALOG NUMBER: 48-957

### Specifications

<b>Host Species</b>	Rabbit
<b>Species Reactivity</b>	Bovine, Chimpanzee, Dog, Horse, Human, Mouse, Rat
<b>Immunogen</b>	A portion of amino acid 670-720 of human MTSS1 protein.
<b>Conjugate</b>	Unconjugated
<b>Tested Applications</b>	IHC, WB
<b>User Note</b>	Optimal dilutions for each application to be determined by the researcher.
<b>Specificity</b>	A portion of amino acid 670-720 of human MTSS1 protein.

### Properties

<b>Purification</b>	Protein G Column
<b>Clonality</b>	Polyclonal
<b>Isotype</b>	IgG
<b>Physical State</b>	Liquid
<b>Buffer</b>	PBS, 0.05% BSA, 0.05% sodium azide.
<b>Concentration</b>	1 mg/ml
<b>Storage Conditions</b>	Short term: 4°C. Long term: Store at -20°C. Avoid freeze-thaw cycles.



## Metastasis Suppressor 1 Antibody 1

Immunohistochemistry staining of Metastasis Suppressor 1 in colon (Formalin-fixed paraffin embedded) tissue using Metastasis Suppressor 1 Antibody.

## Disclaimer

---

<b>Disclaimer</b>	This product is for research use only.
-------------------	--

For research use only. For additional information, visit ProSci's [Terms and Conditions Page](#).