

MAML2 Antibody [MMLP2-1]

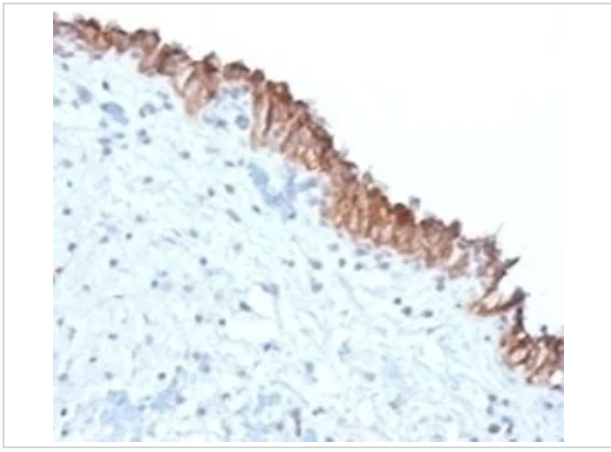
CATALOG NUMBER: 34-056

Specifications

Host Species	Mouse
Species Reactivity	Human
Immunogen	A human recombinant protein was used as the immunogen for this MAML2 antibody.
Conjugate	Unconjugated
Tested Applications	Flow, IF, IHC
User Note	Optimal dilutions for each application to be determined by the researcher

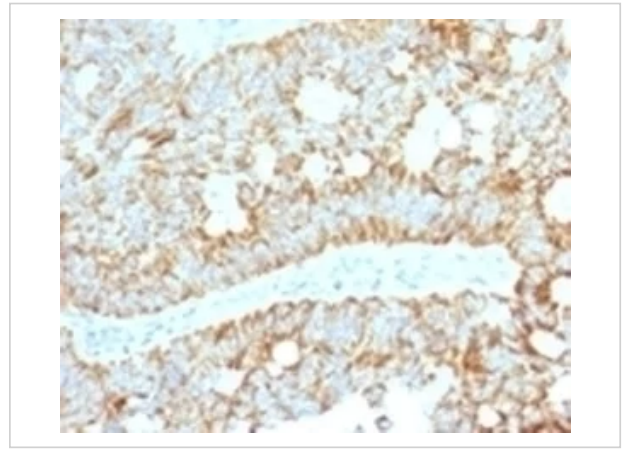
Properties

Purification	Protein G affinity chromatography
Clonality	Monoclonal
Isotype	IgG2a
Physical State	Liquid
Buffer	PBS with 0.1 mg/ml BSA and 0.05% sodium azide
Concentration	0.2 mg/mL
Storage Conditions	Aliquot and Store at 2-8°C. Avoid freeze-thaw cycles.



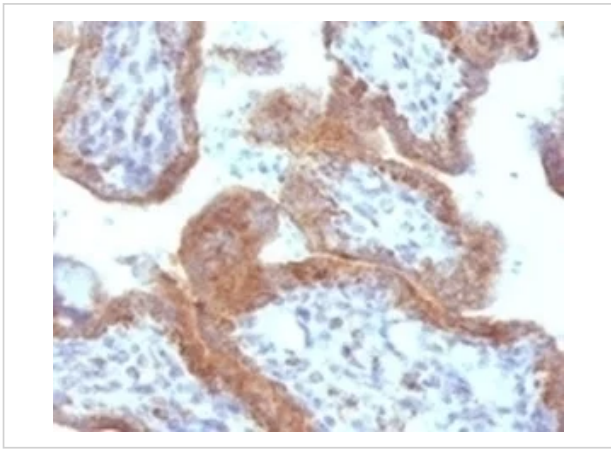
MAML2 Antibody [MMLP2-1] 1

IHC testing of FFPE human bladder carcinoma with MAML2 antibody (clone MMLP2-1).



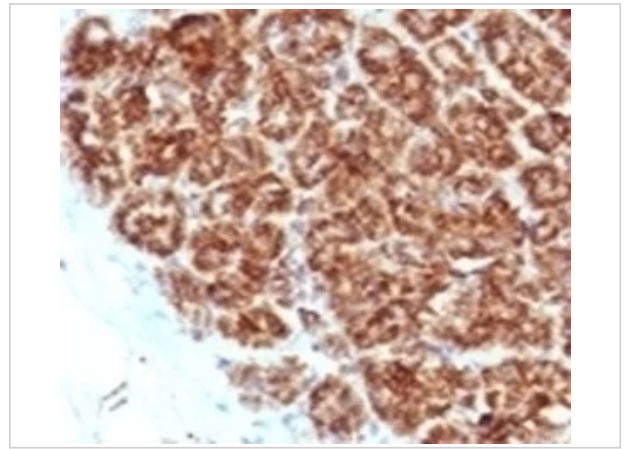
MAML2 Antibody [MMLP2-1] 2

IHC testing of FFPE human colon carcinoma with MAML2 antibody (clone MMLP2-1).



MAML2 Antibody [MMLP2-1] 3

IHC testing of FFPE human placenta with MAML2 antibody (clone MMLP2-1).



MAML2 Antibody [MMLP2-1] 4

IHC testing of FFPE human pancreas with MAML2 antibody (clone MMLP2-1).

Disclaimer

Disclaimer

Optimal dilutions/concentrations should be determined by the end user. The information provided is a guideline for product use. This product is for research use only.

For research use only. For additional information, visit ProSci's [Terms and Conditions Page](#).