

IKK epsilon Antibody

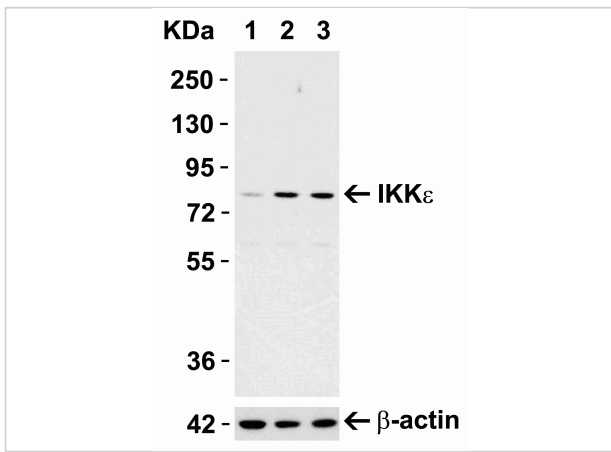
CATALOG NUMBER: 2329

Specifications

| | |
|-----------------------------------|---|
| Host Species | Rabbit |
| Species Reactivity | Human, Mouse |
| Homology | Predicted species reactivity based on immunogen sequence: Rat: (75%) |
| Immunogen | Anti-IKK epsilon antibody (2329) was raised against a peptide corresponding to 16 amino acids near the carboxy terminus of human IKK epsilon. The immunogen is located within the last 50 amino acids of IKK epsilon. |
| Conjugate | Unconjugated |
| Tested Applications | E, IF, IHC-P, WB |
| User Note | Optimal dilutions for each application to be determined by the researcher. |
| Specificity | It has no cross response to IKKa, IKKb, or IKKy. |
| Predicted Molecular Weight | Predicted: 80kD Observed: 80 kD |

Properties

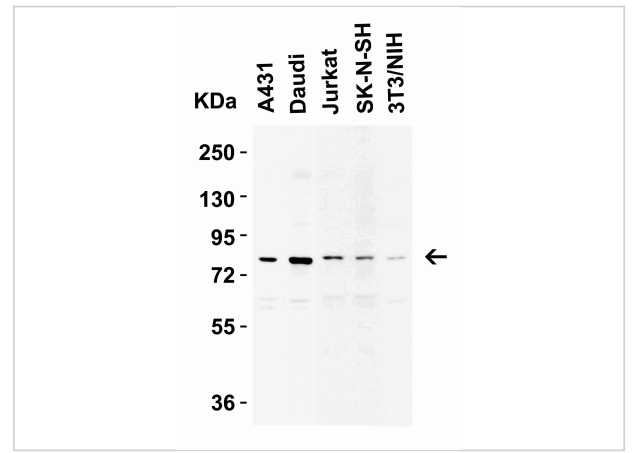
| | |
|---------------------------|---|
| Purification | IKK epsilon Antibody is affinity chromatography purified via peptide column. |
| Clonality | Polyclonal |
| Isotype | IgG |
| Physical State | Liquid |
| Buffer | IKK epsilon Antibody is supplied in PBS containing 0.02% sodium azide. |
| Concentration | 1 mg/ml |
| Storage Conditions | IKK epsilon antibody can be stored at 4°C for three months and -20°C, stable for up to one year. As with all antibodies care should be taken to avoid repeated freeze thaw cycles. Antibodies should not be exposed to prolonged high temperatures. |



IKK epsilon Antibody 1

Figure 1 Induction Validation in Mouse Cell Line

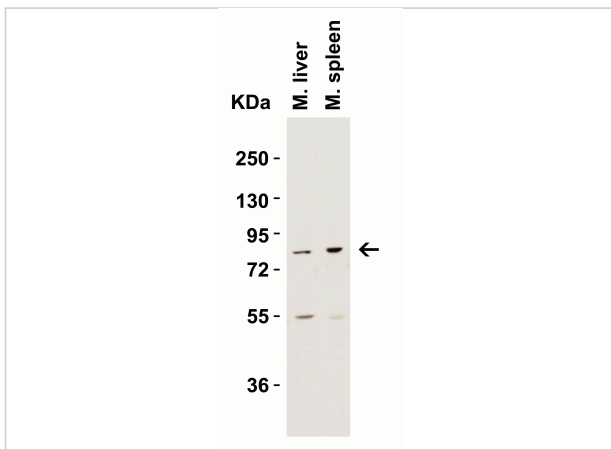
Loading: 15 µg of Raw264.7 cell lysates per lane. Antibodies: IKK epsilon 2329 (1 µg/mL), 1h incubation at RT in 5% NFDN/TBST...



IKK epsilon Antibody 2

Figure 2 Western Blot Validation in Human and Mouse Cell Lines

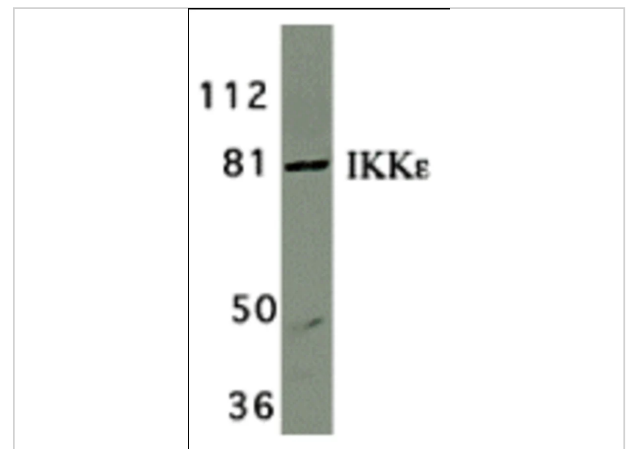
Loading: 15 µg of lysates per lane. Antibodies: IKK epsilon 2329 (1 µg/mL), 1h incubation at RT in 5% NFDN/TBST...



IKK epsilon Antibody 3

Figure 3 Western Blot Validation in Mouse Tissue Lysates

Loading: 15 µg of lysates per lane. Antibodies: IKK epsilon 2329 (2 µg/mL), 1h incubation at RT in 5% NFDN/TBST. Second...



IKK epsilon Antibody 4

Figure 4 Western Blot Validation in Jurkat Cell Lysate

Loading: 15 µg of lysates per lane. Antibodies: IKK epsilon 2329 (2 µg/mL), 1h incubation at RT in 5% NFDN/TBST. Secondary: ...

Disclaimer

Disclaimer

Optimal dilutions/concentrations should be determined by the end user. The information provided is a guideline for product use. This product is for research use only.

For research use only. For additional information, visit ProSci's [Terms and Conditions Page](#).