



ProSci Incorporated
12170 Flint Place
Poway, CA 92064, USA
prosci-inc.com

P: +1 (888) 513-9525
Local: +1 (858) 513-2638
Fax: +1 (858) 513-2692

customercare@prosci-inc.com
techsupport@prosci-inc.com

Human Cell Line I Blot

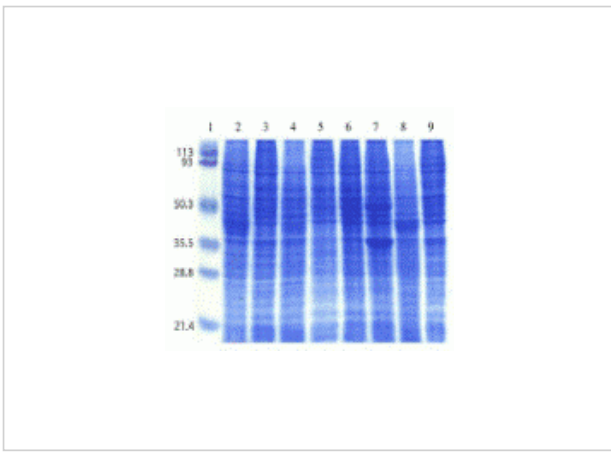
CATALOG NUMBER: 1501

Specifications

Species	Human
Samples Loaded	Lanes: 1, protein markers; 2, MCF7; 3, HeLa; 4, HT-29; 5, 293; 6, Hep G2; 7, A-549; 8, SK-N-SH; and 9, PC-3.
Tested Applications	WB
User Note	Note: Lysate lane order may vary; please consult accompanying shipment paperwork.

Properties

Gel Percentage	Gradient 4-20%
Storage Conditions	Store at 4°C. The blot can be reused after stripping.



Human Cell Line I Blot 1

Coomassie blue staining of human cell lysates in 12% SDS-PAGE.
Lanes: 1, protein markers; 2, MCF7; 3, HeLa; 4, HT-29; 5, 293; 6, Hep G2; 7, A-549; 8, SK-N-SH; and 9, PC-3.

Disclaimer

Disclaimer	This product is for research use only.
-------------------	--

For research use only. For additional information, visit ProSci's [Terms and Conditions Page](#).