

HER2 Antibody [2KR17]

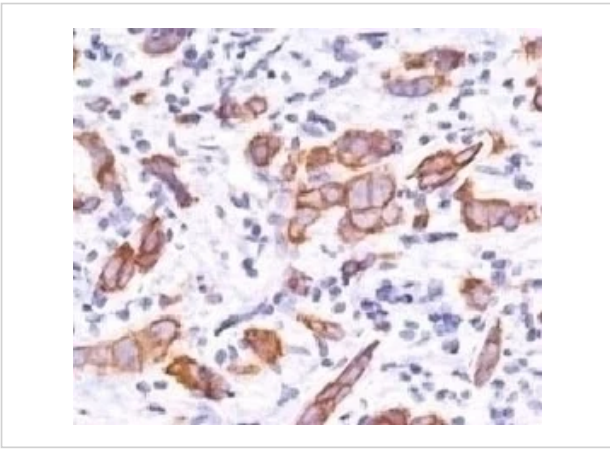
CATALOG NUMBER: 33-921

Specifications

Host Species	Mouse
Species Reactivity	Human
Immunogen	Recombinant human protein was used as the immunogen for this HER2 antibody.
Conjugate	Unconjugated
Tested Applications	Flow, IF, IHC
User Note	Optimal dilutions for each application to be determined by the researcher

Properties

Purification	Protein G affinity chromatography
Clonality	Monoclonal
Isotype	IgG1, kappa
Physical State	Liquid
Buffer	PBS with 0.1 mg/ml BSA and 0.05% sodium azide
Concentration	0.2 mg/mL
Storage Conditions	Aliquot and Store at 2-8°C. Avoid freeze-thaw cycles.



HER2 Antibody [2KR17] 1

IHC testing of breast invasive carcinoma and HER2 antibody (2KR17).

Disclaimer

Disclaimer	Optimal dilutions/concentrations should be determined by the end user. The information provided is a guideline for product use. This product is for research use only.
-------------------	--

For research use only. For additional information, visit ProSci's [Terms and Conditions Page](#).