

## GM-CSF Antibody (biotin)

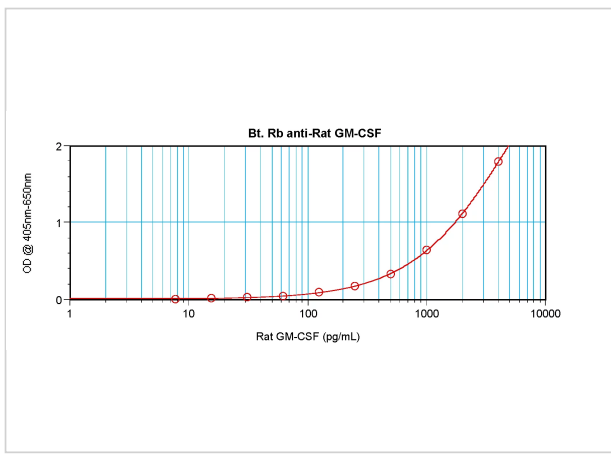
CATALOG NUMBER: 38-284

### Specifications

<b>Host Species</b>	Rabbit
<b>Species Reactivity</b>	Rat
<b>Immunogen</b>	Produced from sera of rabbits immunized with highly pure recombinant Rat GM-CSF. Rat GM-CSF specific antibody was purified by affinity chromatography and then biotinylated.
<b>Conjugate</b>	Biotin
<b>Tested Applications</b>	E, WB
<b>User Note</b>	Centrifuge vial prior to opening.

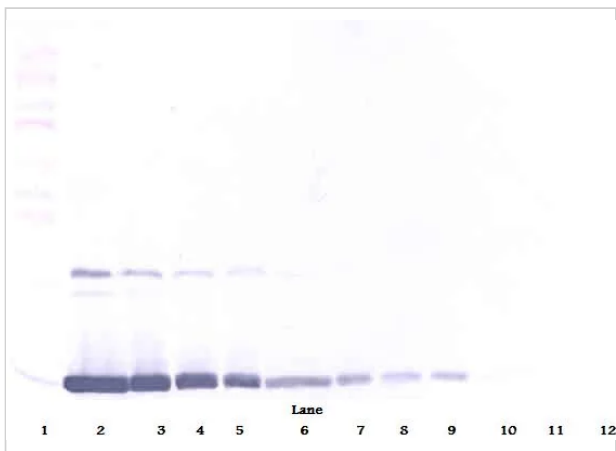
### Properties

<b>Clonality</b>	Polyclonal
<b>Physical State</b>	Lyophilized
<b>Concentration</b>	batch dependent
<b>Storage Conditions</b>	The lyophilized antibody is stable for at least 2 years from date of receipt at -20°C. The reconstituted antibody is stable for at least two weeks at 2-80°C. Frozen aliquots are stable for at least 6 months when stored at -20°C. Avoid repeated freeze-thaw cycles.



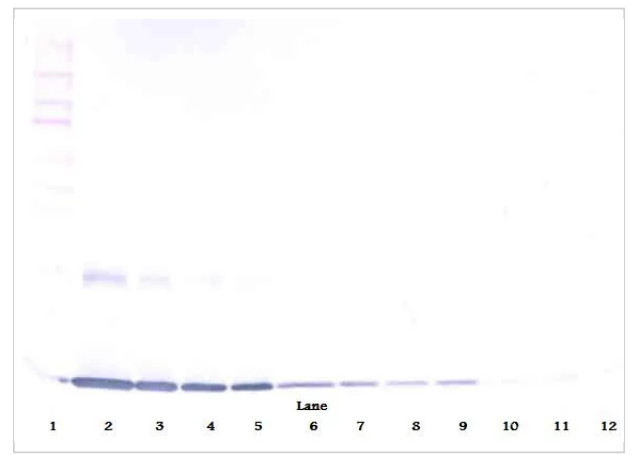
## GM-CSF Antibody (biotin) 1

To detect Rat GM-CSF by sandwich ELISA (using 100  $\mu$ l/well) a concentration of 0.25 – 1.0  $\mu$ g/ml of this antibody is required. This biotinylated polyclonal antibody, in conjunction with ProSci's Poly...



## GM-CSF Antibody (biotin) 3

To detect Rat GM-CSF by Western Blot analysis this antibody can be used at a concentration of 0.1 - 0.2 mg/ml. When used in conjunction with compatible development reagents the detection limit for ...



## GM-CSF Antibody (biotin) 2

To detect Rat GM-CSF by Western Blot analysis this antibody can be used at a concentration of 0.1 - 0.2 mg/ml. When used in conjunction with compatible development reagents the detection limit for ...

## Disclaimer

### Disclaimer

This product is for research use only.

For research use only. For additional information, visit ProSci's [Terms and Conditions Page](#).