

GLUT2 Antibody

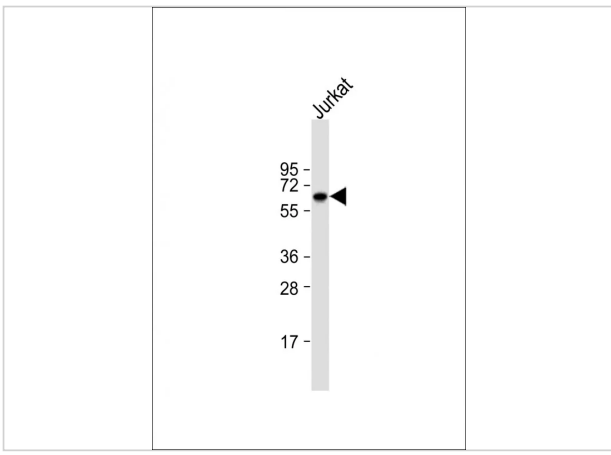
CATALOG NUMBER: 58-080

Specifications

Host Species	Rabbit
Species Reactivity	Human
Immunogen	This GLUT2 (SLC2A2) antibody is generated from rabbits immunized with a KLH conjugated synthetic peptide between 31-60 amino acids from the N-terminal region of human GLUT2 (SLC2A2).
Conjugate	Unconjugated
Tested Applications	Flow, WB
User Note	Optimal dilutions for each application to be determined by the researcher.
Predicted Molecular Weight	57 kDa

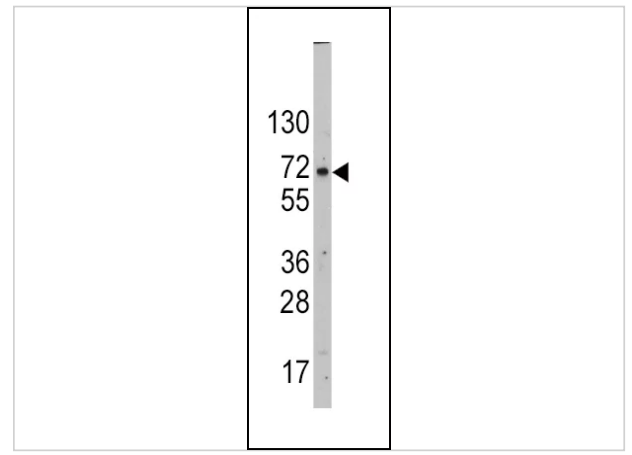
Properties

Purification	This antibody is prepared by Saturated Ammonium Sulfate (SAS) precipitation followed by dialysis
Clonality	Polyclonal
Isotype	Rabbit Ig
Physical State	Liquid
Buffer	Supplied in PBS with 0.09% (W/V) sodium azide.
Concentration	batch dependent
Storage Conditions	Store at 4°C for three months and -20°C, stable for up to one year. As with all antibodies care should be taken to avoid repeated freeze thaw cycles. Antibodies should not be exposed to prolonged high temperatures.



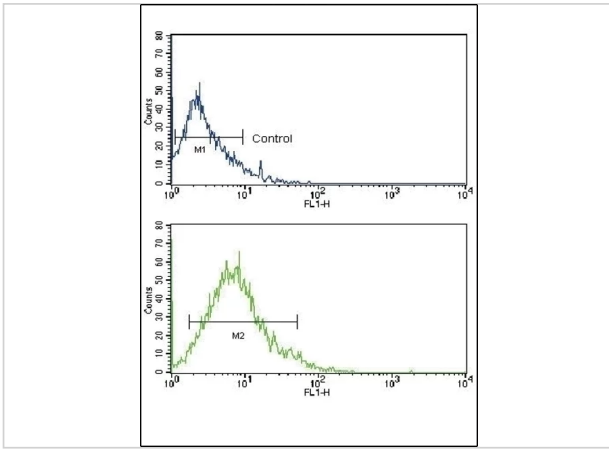
GLUT2 Antibody 1

Western Blot at 1:1000 dilution + Jurkat whole cell lysate
Lysates/proteins at 20 ug per lane.



GLUT2 Antibody 2

Western blot analysis of SLC2A2 Antibody in HepG2 cell line
lysates (35ug/lane)



GLUT2 Antibody 3

Flow cytometric analysis of HL-60 cells using GLUT2 (SLC2A2)
Antibody (bottom histogram) compared to a negative control cell
(top histogram). FITC-conjugated goat-anti-rabbit secondary
antibodies w...

Disclaimer

Disclaimer

Optimal dilutions/concentrations should be determined by the end user. The information provided is a guideline for product use. This product is for research use only.

For research use only. For additional information, visit ProSci's [Terms and Conditions Page](#).