

GITRL Antibody

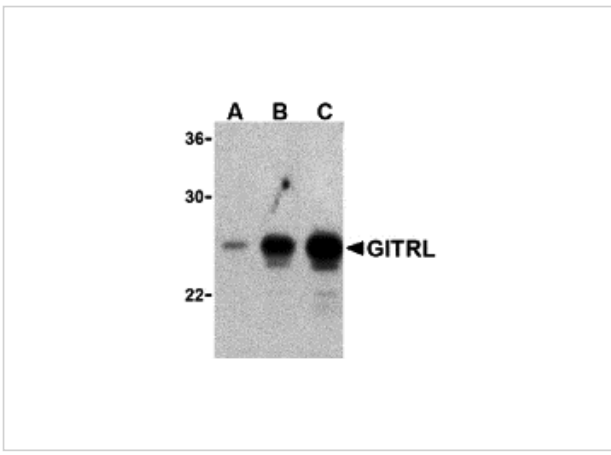
CATALOG NUMBER: 3591

Specifications

Host Species	Rabbit
Species Reactivity	Human, Mouse
Immunogen	GITRL antibody was raised against purified recombinant human GITR ligand.
Conjugate	Unconjugated
Tested Applications	E, ICC, WB
User Note	Optimal dilutions for each application to be determined by the researcher.

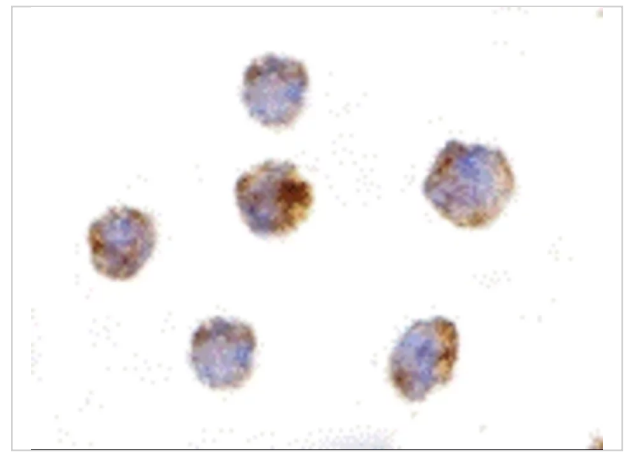
Properties

Purification	GITRL Antibody is affinity chromatography purified via peptide column.
Clonality	Polyclonal
Isotype	IgG
Physical State	Liquid
Buffer	GITRL Antibody is supplied in PBS containing 0.02% sodium azide.
Concentration	1 mg/mL
Storage Conditions	GITRL antibody can be stored at 4°C for three months and -20°C, stable for up to one year. As with all antibodies care should be taken to avoid repeated freeze thaw cycles. Antibodies should not be exposed to prolonged high temperatures.



GITRL Antibody 1

Western blot analysis of (A) 5 ng, (B) 25 ng, and (C) 50 ng of purified recombinant GITRL with ITRL antibody at 1 $\mu\text{g}/\text{mL}$.



GITRL Antibody 2

Immunocytochemistry of GITRL in THP-1 cells with GITRL antibody at 10 $\mu\text{g}/\text{mL}$.

Disclaimer

<p>Disclaimer</p>	<p>Optimal dilutions/concentrations should be determined by the end user. The information provided is a guideline for product use. This product is for research use only.</p>
--------------------------	---

For research use only. For additional information, visit ProSci's [Terms and Conditions Page](#).