

## Gag polyprotein Antibody

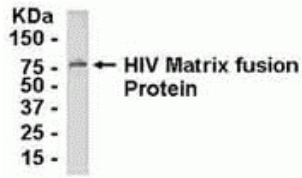
CATALOG NUMBER: XW-8151

### Specifications

<b>Host Species</b>	Chicken
<b>Species Reactivity</b>	Virus
<b>Immunogen</b>	2-132
<b>Conjugate</b>	Unconjugated
<b>Tested Applications</b>	WB
<b>User Note</b>	Optimal dilutions for each application to be determined by the researcher.
<b>Predicted Molecular Weight</b>	55.7 kDa (calculated)

### Properties

<b>Purification</b>	Immunoaffinity Purified
<b>Clonality</b>	Polyclonal
<b>Physical State</b>	Liquid
<b>Buffer</b>	Phosphate-Buffered Saline. No preservatives added.
<b>Concentration</b>	1 mg/mL
<b>Storage Conditions</b>	Gag polyprotein antibody can be stored at 4°C for short term (weeks). Long term storage should be at -20°C. As with all antibodies care should be taken to avoid repeated freeze thaw cycles. Antibodies should not be exposed to prolonged high temperatures.



## Gag polyprotein Antibody 1

E coli-derived fusion protein as test antigen. Affinity-purified IgY dilution: 1:2000, Goat anti-IgY-HRP dilution: 1:1000. Colorimetric method for signal development.

## Disclaimer

<b>Disclaimer</b>	Optimal dilutions/concentrations should be determined by the end user. The information provided is a guideline for product use. Optimal dilutions/concentrations should be determined by the end user. The information provided is a guideline for product use. This product is for research use only.
-------------------	--

For research use only. For additional information, visit ProSci's [Terms and Conditions Page](#).