

## DNAJA2 Antibody

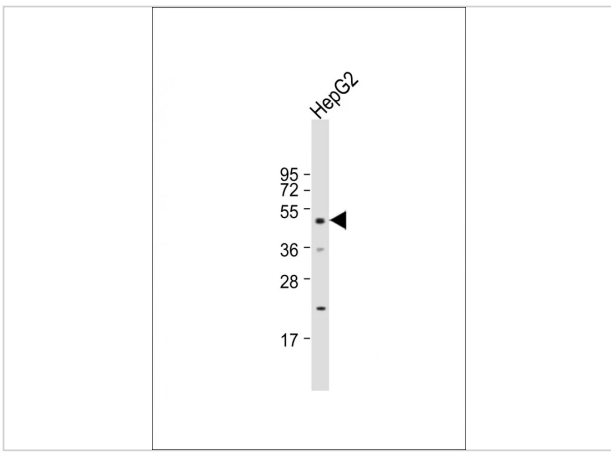
CATALOG NUMBER: 58-956

### Specifications

<b>Host Species</b>	Rabbit
<b>Species Reactivity</b>	Human
<b>Homology</b>	Predicted species reactivity based on immunogen sequence: Bovine, Mouse, Rat
<b>Immunogen</b>	This DNAJA2 antibody is generated from rabbits immunized with a KLH conjugated synthetic peptide between 44-72 amino acids from the N-terminal region of human DNAJA2.
<b>Conjugate</b>	Unconjugated
<b>Tested Applications</b>	WB
<b>User Note</b>	Optimal dilutions for each application to be determined by the researcher.
<b>Predicted Molecular Weight</b>	46 kDa

### Properties

<b>Purification</b>	This antibody is purified through a protein A column, followed by peptide affinity purification.
<b>Clonality</b>	Polyclonal
<b>Isotype</b>	Rabbit Ig
<b>Physical State</b>	Liquid
<b>Buffer</b>	Supplied in PBS with 0.09% (W/V) sodium azide.
<b>Concentration</b>	batch dependent
<b>Storage Conditions</b>	Store at 4°C for three months and -20°C, stable for up to one year. As with all antibodies care should be taken to avoid repeated freeze thaw cycles. Antibodies should not be exposed to prolonged high temperatures.



## DNAJA2 Antibody 1

Western Blot at 1:1000 dilution + HepG2 whole cell lysate  
Lysates/proteins at 20 ug per lane.

## Disclaimer

### Disclaimer

Optimal dilutions/concentrations should be determined by the end user. The information provided is a guideline for product use. This product is for research use only.

For research use only. For additional information, visit ProSci's [Terms and Conditions Page](#).