

## Dcr-1 Antibody

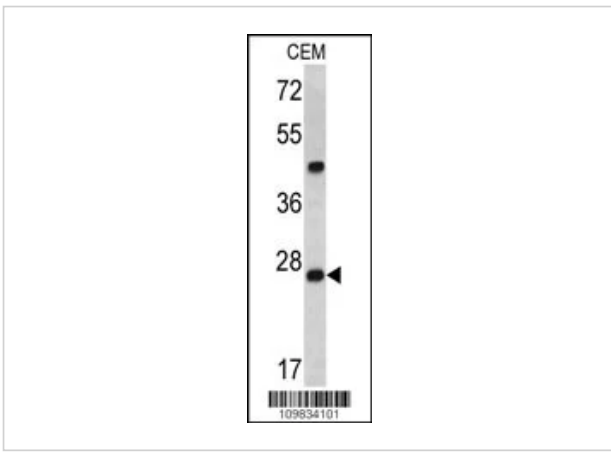
CATALOG NUMBER: 60-630

### Specifications

<b>Host Species</b>	Rabbit
<b>Species Reactivity</b>	C. elegans
<b>Immunogen</b>	This Dcr-1 antibody is generated from rabbits immunized with a KLH conjugated synthetic peptide between 1068-1097 amino acids from the Central region of human Dcr-1.
<b>Conjugate</b>	Unconjugated
<b>Tested Applications</b>	WB
<b>User Note</b>	Optimal dilutions for each application to be determined by the researcher.
<b>Predicted Molecular Weight</b>	218 kDa

### Properties

<b>Purification</b>	This antibody is prepared by Saturated Ammonium Sulfate (SAS) precipitation followed by dialysis
<b>Clonality</b>	Polyclonal
<b>Isotype</b>	Rabbit Ig
<b>Physical State</b>	Liquid
<b>Buffer</b>	Supplied in PBS with 0.09% (W/V) sodium azide.
<b>Concentration</b>	batch dependent
<b>Storage Conditions</b>	Store at 4°C for three months and -20°C, stable for up to one year. As with all antibodies care should be taken to avoid repeated freeze thaw cycles. Antibodies should not be exposed to prolonged high temperatures.



## Dcr-1 Antibody 1

Western blot analysis of Dcr-1 antibody in CEM cell line lysates (35ug/lane)

## Disclaimer

### Disclaimer

Optimal dilutions/concentrations should be determined by the end user. The information provided is a guideline for product use. This product is for research use only.

For research use only. For additional information, visit ProSci's [Terms and Conditions Page](#).