

DBC1 Antibody

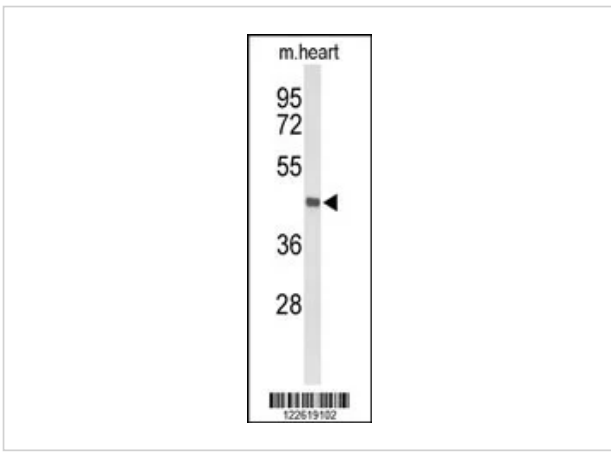
CATALOG NUMBER: 63-958

Specifications

Host Species	Rabbit
Species Reactivity	Human, Mouse
Homology	Predicted species reactivity based on immunogen sequence: Bovine, Chicken, Rat
Immunogen	This DBC1 antibody is generated from rabbits immunized with a KLH conjugated synthetic peptide between 85-111 amino acids from the N-terminal region of human DBC1.
Conjugate	Unconjugated
Tested Applications	WB
User Note	Optimal dilutions for each application to be determined by the researcher.
Predicted Molecular Weight	89 kDa

Properties

Purification	This antibody is purified through a protein A column, followed by peptide affinity purification.
Clonality	Polyclonal
Isotype	Rabbit Ig
Physical State	Liquid
Buffer	Supplied in PBS with 0.09% (W/V) sodium azide.
Concentration	batch dependent
Storage Conditions	Store at 4°C for three months and -20°C, stable for up to one year. As with all antibodies care should be taken to avoid repeated freeze thaw cycles. Antibodies should not be exposed to prolonged high temperatures.



DBC1 Antibody 1

Western blot analysis of DBC1 Antibody in mouse heart tissue lysates (35ug/lane)

Disclaimer

Disclaimer

Optimal dilutions/concentrations should be determined by the end user. The information provided is a guideline for product use. This product is for research use only.

For research use only. For additional information, visit ProSci's [Terms and Conditions Page](#).