

CR2 Antibody

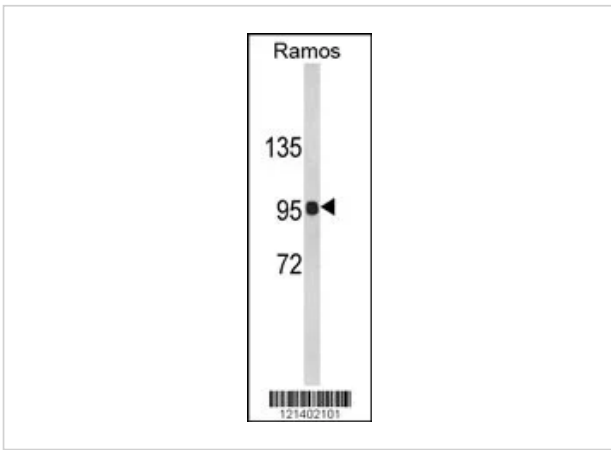
CATALOG NUMBER: 62-563

Specifications

Host Species	Rabbit
Species Reactivity	Human
Immunogen	This CR2 antibody is generated from rabbits immunized with a KLH conjugated synthetic peptide between 986-1014 amino acids from the C-terminal region of human CR2.
Conjugate	Unconjugated
Tested Applications	Flow, IHC-P, WB
User Note	Optimal dilutions for each application to be determined by the researcher.
Predicted Molecular Weight	113 kDa

Properties

Purification	This antibody is purified through a protein A column, followed by peptide affinity purification.
Clonality	Polyclonal
Isotype	Rabbit Ig
Physical State	Liquid
Buffer	Supplied in PBS with 0.09% (W/V) sodium azide.
Concentration	batch dependent
Storage Conditions	Store at 4°C for three months and -20°C, stable for up to one year. As with all antibodies care should be taken to avoid repeated freeze thaw cycles. Antibodies should not be exposed to prolonged high temperatures.



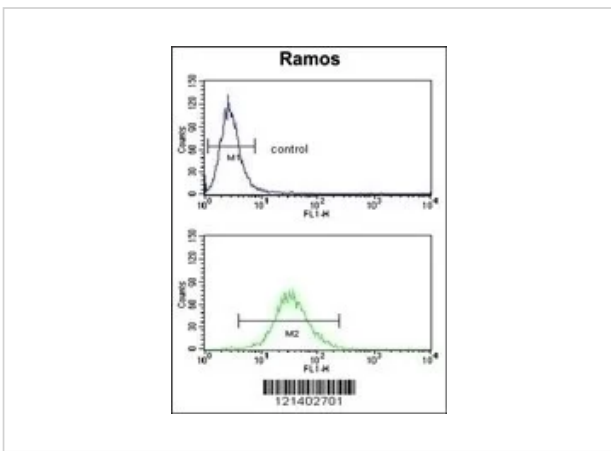
CR2 Antibody 1

Western blot analysis of CR2 Antibody in Ramos cell line lysates (35ug/lane)



CR2 Antibody 2

Formalin-fixed and paraffin-embedded human Lymph reacted with CR2 Antibody, which was peroxidase-conjugated to the secondary antibody, followed by DAB staining.



CR2 Antibody 3

Flow cytometry analysis of Ramos cells (bottom histogram) compared to a negative control cell (top histogram). FITC-conjugated goat-anti-rabbit secondary antibodies were used for the analysis.

Disclaimer

Disclaimer

Optimal dilutions/concentrations should be determined by the end user. The information provided is a guideline for product use. This product is for research use only.

For research use only. For additional information, visit ProSci's [Terms and Conditions Page](#).