

CD6 Antibody [C6/372]

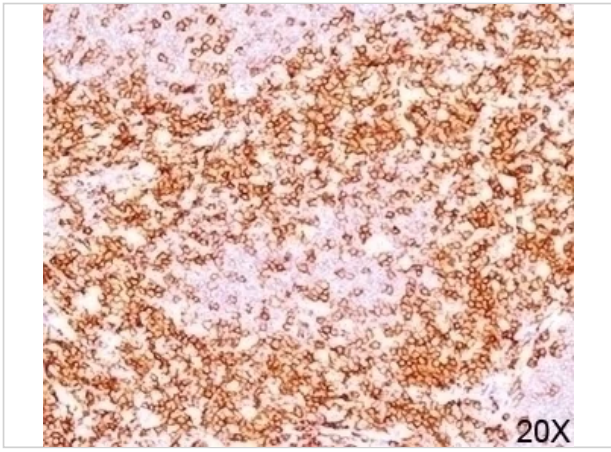
CATALOG NUMBER: 33-086

Specifications

Host Species	Mouse
Species Reactivity	Human
Immunogen	Human recombinant CD6 protein was used as the immunogen for this antibody.
Conjugate	Unconjugated
Tested Applications	Flow, IF, IHC
User Note	Optimal dilutions for each application to be determined by the researcher

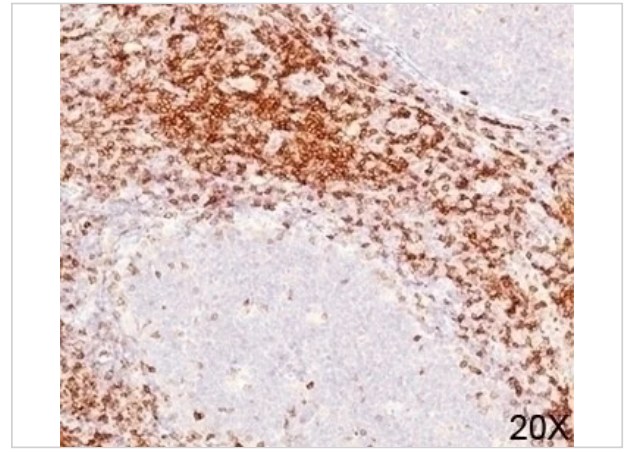
Properties

Purification	Protein G affinity chromatography
Clonality	Monoclonal
Isotype	IgG1
Physical State	Liquid
Buffer	PBS with 0.1 mg/ml BSA and 0.05% sodium azide
Concentration	0.2 mg/mL
Storage Conditions	Aliquot and Store at 2-8°C. Avoid freeze-thaw cycles.



CD6 Antibody [C6/372] 1

IHC testing of human tonsil (10X) stained with CD6 antibody (C6/372).



CD6 Antibody [C6/372] 2

IHC testing of human tonsil (20X) stained with CD6 antibody (C6/372).

Disclaimer

Disclaimer	Optimal dilutions/concentrations should be determined by the end user. The information provided is a guideline for product use. This product is for research use only.
-------------------	--

For research use only. For additional information, visit ProSci's [Terms and Conditions Page](#).