

CAPN10 Antibody

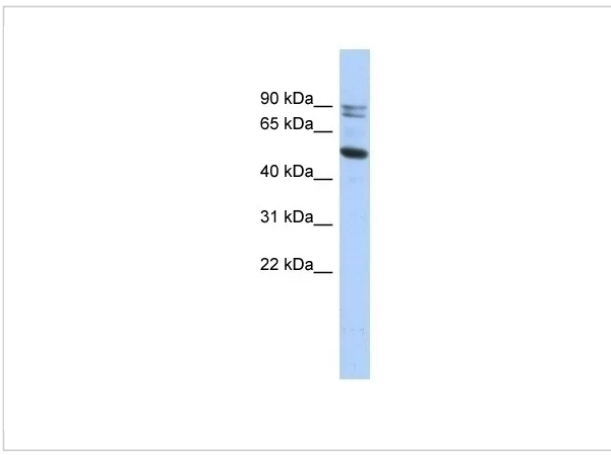
CATALOG NUMBER: 26-646

Specifications

Host Species	Rabbit
Species Reactivity	Human
Immunogen	Antibody produced in rabbits immunized with a synthetic peptide corresponding a region of human CAPN10.
Conjugate	Unconjugated
Tested Applications	E, WB
User Note	Optimal dilutions for each application to be determined by the researcher.
Predicted Molecular Weight	58 kDa

Properties

Purification	Antibody is purified by peptide affinity chromatography method.
Clonality	Polyclonal
Physical State	Liquid
Buffer	Purified antibody supplied in 1x PBS buffer with 0.09% (w/v) sodium azide and 2% sucrose.
Concentration	batch dependent
Storage Conditions	For short periods of storage (days) store at 4°C. For longer periods of storage, store CAPN10 antibody at -20°C. As with any antibody avoid repeat freeze-thaw cycles.



CAPN10 Antibody 1

Antibody used in WB on Human HT1080 at 0.2-1 ug/ml.

Disclaimer

Disclaimer	This product is for research use only.
-------------------	--

For research use only. For additional information, visit ProSci's [Terms and Conditions Page](#).