

BRIX1 Antibody

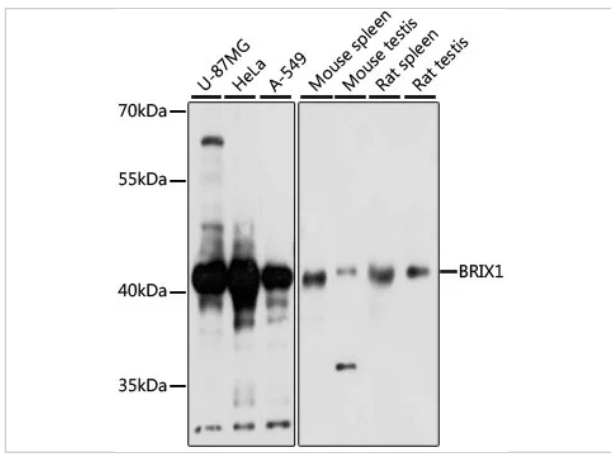
CATALOG NUMBER: 15-566

Specifications

Host Species	Rabbit
Species Reactivity	Human, Mouse, Rat
Immunogen	Recombinant fusion protein containing a sequence corresponding to amino acids 1-353 of human BRIX1 (NP_060791.3).
Conjugate	Unconjugated
Tested Applications	IHC, WB
User Note	Optimal dilutions for each application to be determined by the researcher.
Predicted Molecular Weight	Observed: 41kDa

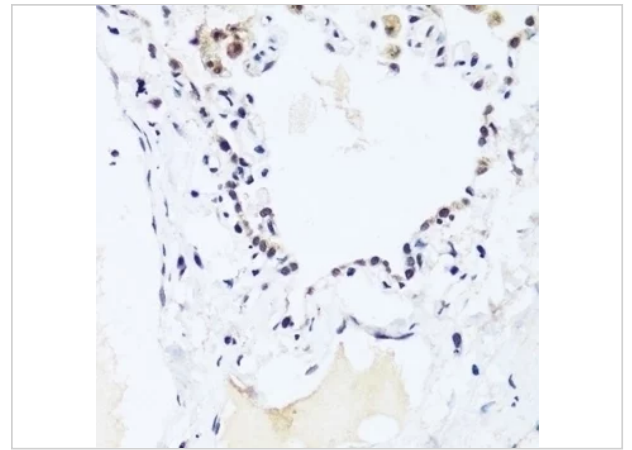
Properties

Purification	Affinity purification
Clonality	Polyclonal
Isotype	IgG
Physical State	Liquid
Buffer	PBS with 0.02% sodium azide, 50% glycerol, pH7.3.
Concentration	batch dependent
Storage Conditions	Store at -20°C. Avoid freeze / thaw cycles.



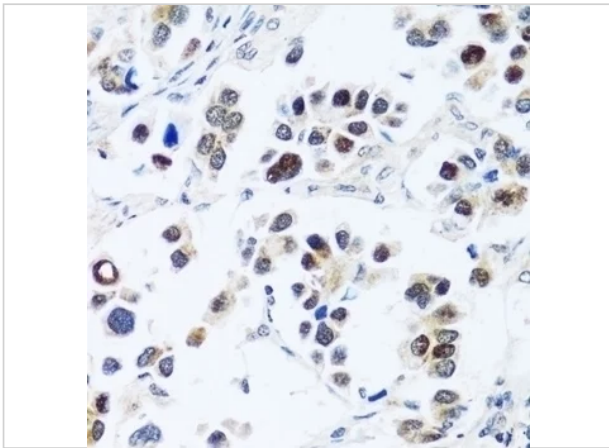
BRIX1 Antibody 1

Western blot analysis of extracts of various cell lines, using BRIX1 antibody (15-566) at 1:1000 dilution. Secondary antibody: HRP Goat Anti-Rabbit IgG (H+L) at 1:10000 dilution. Lysates/pr...



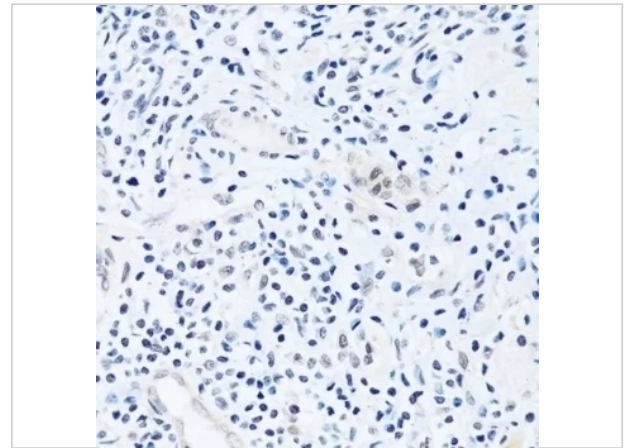
BRIX1 Antibody 2

Immunohistochemistry of paraffin-embedded human lung using BRIX1 antibody (15-566) at dilution of 1:100 (40x lens).



BRIX1 Antibody 3

Immunohistochemistry of paraffin-embedded human lung cancer using BRIX1 antibody (15-566) at dilution of 1:100 (40x lens).



BRIX1 Antibody 4

Immunohistochemistry of paraffin-embedded human appendix using BRIX1 antibody (15-566) at dilution of 1:100 (40x lens).

Disclaimer

<p>Disclaimer</p>	<p>Optimal dilutions/concentrations should be determined by the end user. The information provided is a guideline for product use. This product is for research use only.</p>
--------------------------	---

For research use only. For additional information, visit ProSci's [Terms and Conditions Page](#).