

Beta III Tubulin Antibody, Monoclonal

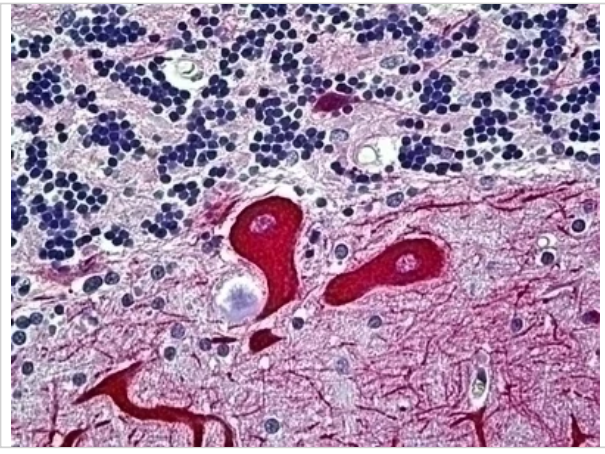
CATALOG NUMBER: 51-652

Specifications

Host Species	Mouse
Species Reactivity	Bovine, Dog, Gibbon, Gorilla, Human, Monkey, Pig
Immunogen	Synthetic peptide corresponding to amino acids 436-450 (C-MYEDDEESEAQGPK) of neuronal specific beta3 tubulin (KLH coupled). Epitope: EAQGPK
Conjugate	Unconjugated
Tested Applications	ICC, IHC, WB
User Note	Optimal dilutions for each application to be determined by the researcher.
Specificity	Recognizes human neuronal specific beta3 tubulin. Species cross-reactivity: Mouse, rat and bovine. Broad species cross-reactivity predicted based on conservation of immunogen sequence.

Properties

Purification	Protein G Column
Clonality	Monoclonal
Isotype	IgG2a
Physical State	Liquid
Buffer	0.01 M sodium phosphate, pH 7.0, 0.01M EDTA, 0.15M sodium chloride.
Concentration	0.82 mg/ml
Storage Conditions	Beta III Tubulin antibody may be stored at 4 °C for short-term only. As with all antibodies avoid freeze/thaw cycles. Store at -20 °C for long term. Aliquots are stable for at least 12 months



Beta III Tubulin Antibody, Monoclonal 1

Immunohistochemistry of human cerebellum tissue stained using Beta III Tubulin Monoclonal Antibody.

Disclaimer

Disclaimer	This product is for research use only.
-------------------	--

For research use only. For additional information, visit ProSci's [Terms and Conditions Page](#).