

ApoL1 Antibody

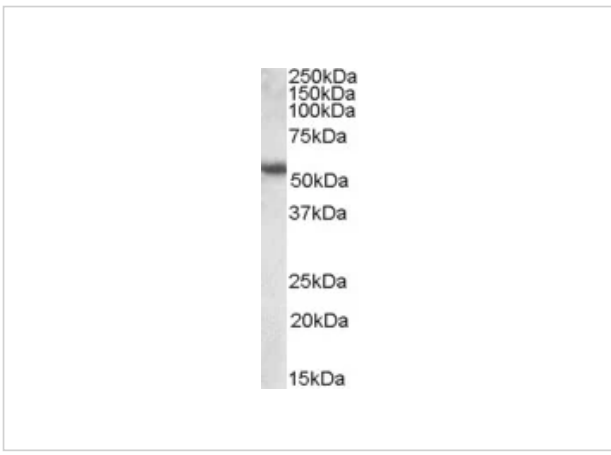
CATALOG NUMBER: 46-746

Specifications

Host Species	Goat
Species Reactivity	Human
Immunogen	The immunogen for this antibody is: C-NNNYKILQADQE
Conjugate	Unconjugated
Tested Applications	E, WB
Specificity	This antibody is expected to recognize both reported isoforms (NP_003652.2; NP_663318.1).

Properties

Purification	Purified from goat serum by ammonium sulphate precipitation followed by antigen affinity chromatography using the immunizing peptide.
Clonality	Polyclonal
Physical State	Liquid
Buffer	Supplied at 0.5 mg/ml in Tris saline, 0.02% sodium azide, pH7.3 with 0.5% bovine serum albumin. Aliquot and store at -20°C. Minimize freezing and thawing.
Concentration	500 ug/mL
Storage Conditions	Aliquot and store at -20°C. Minimize freezing and thawing.



ApoL1 Antibody 1

46-746 (0.1ug/ml) staining of Human Placenta lysate (35ug protein in RIPA buffer). Primary incubation was 1 hour. Detected by chemiluminescence.

Disclaimer

Disclaimer	Optimal dilutions/concentrations should be determined by the end user. The information provided is a guideline for product use. Optimal dilutions/concentrations should be determined by the end user. The information provided is a guideline for product use. This product is for research use only.
-------------------	--

For research use only. For additional information, visit ProSci's [Terms and Conditions Page](#).