

Amphiphysin Antibody

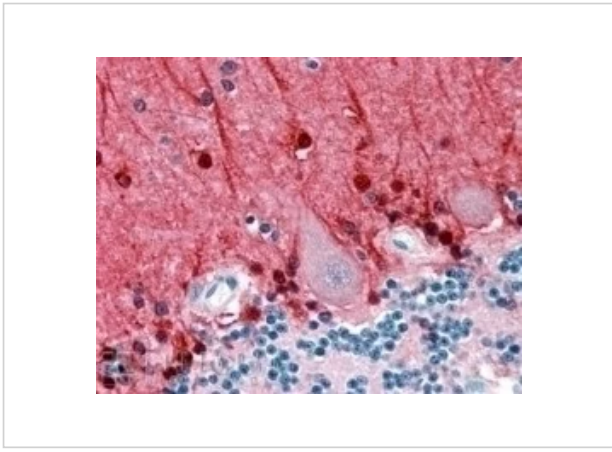
CATALOG NUMBER: 45-006

Specifications

| | |
|----------------------------|--|
| Host Species | Goat |
| Species Reactivity | Human, Mouse |
| Homology | Expected Species Reactivity based on sequence homology: Rat, Dog |
| Immunogen | The immunogen for this antibody is: C-KRKDESRISKAE |
| Conjugate | Unconjugated |
| Tested Applications | E, IHC, WB |
| Specificity | This antibody is expected to recognise both reported isoforms (NP_001626.1 and NP_647477.1). |

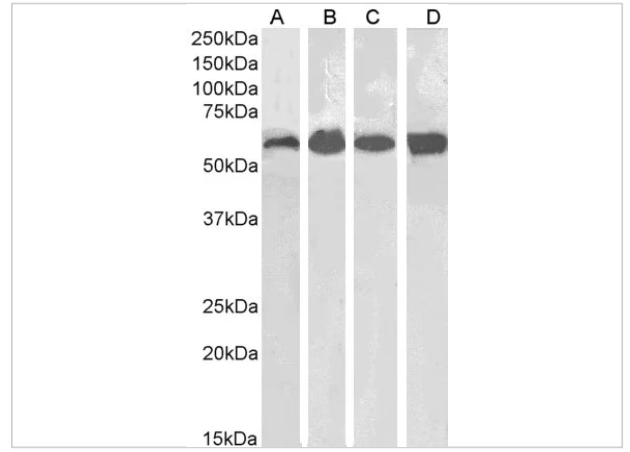
Properties

| | |
|---------------------------|--|
| Purification | Purified from goat serum by ammonium sulphate precipitation followed by antigen affinity chromatography using the immunizing peptide. |
| Clonality | Polyclonal |
| Physical State | Liquid |
| Buffer | Supplied at 0.5 mg/ml in Tris saline, 0.02% sodium azide, pH7.3 with 0.5% bovine serum albumin. Aliquot and store at -20°C. Minimize freezing and thawing. |
| Concentration | 500 ug/mL |
| Storage Conditions | Aliquot and store at -20°C. Minimize freezing and thawing. |



Amphiphysin Antibody 1

45-006 (0.5ug/ml) staining of mouse brain lysate (35ug protein in RIPA buffer). Primary incubation was 1 hour. Detected by chemiluminescence.



Amphiphysin Antibody 2

45-006 (2.5ug/ml) staining of paraffin embedded Human Cerebellum. Steamed antigen retrieval with citrate buffer pH 6, AP-staining.

Disclaimer

| | |
|-------------------|--|
| Disclaimer | Optimal dilutions/concentrations should be determined by the end user. The information provided is a guideline for product use. Optimal dilutions/concentrations should be determined by the end user. The information provided is a guideline for product use. This product is for research use only. |
|-------------------|--|

For research use only. For additional information, visit ProSci's [Terms and Conditions Page](#).