

ADRA1B Antibody

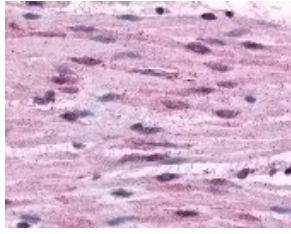
CATALOG NUMBER: 48-309

Specifications

| | |
|----------------------------|---|
| Host Species | Rabbit |
| Species Reactivity | Bovine, Dog, Gibbon, Gorilla, Hamster, Horse, Human, Monkey, Mouse, Pig, Rat |
| Immunogen | ADRA1B antibody was raised against a peptide located in the 3rd cytoplasmic domain of ADRA1B (Human). |
| Conjugate | Unconjugated |
| Tested Applications | E, IHC |
| User Note | Optimal dilutions for each application to be determined by the researcher. |
| Specificity | BLAST analysis of the peptide immunogen showed no homology with other human proteins. |

Properties

| | |
|---------------------------|---|
| Purification | Immunoaffinity Chromatography |
| Clonality | Polyclonal |
| Physical State | Liquid |
| Buffer | PBS, 0.1% sodium azide. |
| Concentration | 1 mg/ml |
| Storage Conditions | ADRA1B antibody should be stored long term (months) at -80 °C and short term (days) at 4 °C. As with all antibodies avoid freeze/thaw cycles. |



ADRA1B Antibody 1

Immunohistochemistry staining of ADRA1B in smooth muscle cells using ADRA1B Antibody.

Disclaimer

| | |
|-------------------|--|
| Disclaimer | This product is for research use only. |
|-------------------|--|

For research use only. For additional information, visit ProSci's [Terms and Conditions Page](#).