

ADCY6 Antibody

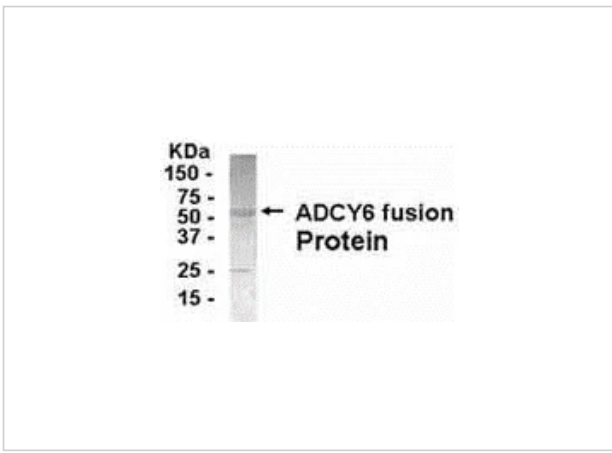
CATALOG NUMBER: XW-7717

Specifications

Host Species	Chicken
Species Reactivity	Human
Immunogen	1-121
Conjugate	Unconjugated
Tested Applications	WB
User Note	Optimal dilutions for each application to be determined by the researcher.
Predicted Molecular Weight	130.6 kDa (calculated)

Properties

Purification	Immunoaffinity Purified
Clonality	Polyclonal
Physical State	Liquid
Buffer	Phosphate-Buffered Saline. No preservatives added.
Concentration	1 mg/mL
Storage Conditions	ADCY6 antibody can be stored at 4°C for short term (weeks). Long term storage should be at -20°C. As with all antibodies care should be taken to avoid repeated freeze thaw cycles. Antibodies should not be exposed to prolonged high temperatures.



ADCY6 Antibody 1

E coli-derived fusion protein as test antigen. Affi-anti-ATP7A IgY dilution: 1:2000, Goat anti-IgY-HRP dilution: 1:1000. Colorimetric method for signal development.

Disclaimer

Disclaimer	Optimal dilutions/concentrations should be determined by the end user. The information provided is a guideline for product use. Optimal dilutions/concentrations should be determined by the end user. The information provided is a guideline for product use. This product is for research use only.
-------------------	--

For research use only. For additional information, visit ProSci's [Terms and Conditions Page](#).