

a Synuclein (phospho Tyr136) Antibody

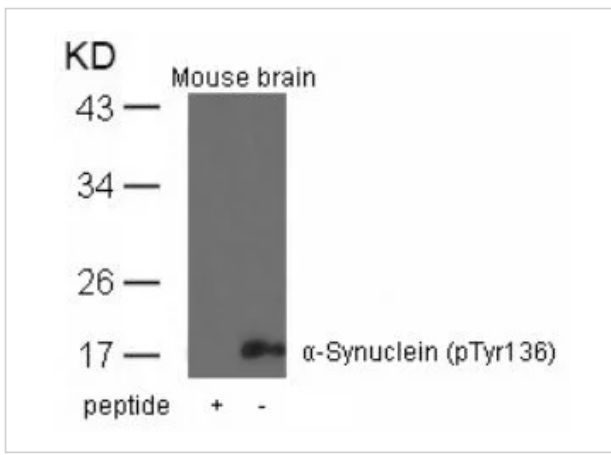
CATALOG NUMBER: 79-491

Specifications

Host Species	Rabbit
Species Reactivity	Human, Mouse, Rat
Immunogen	a-Synuclein (Phospho-Tyr136) antibody was raised against a peptide sequence around phosphorylation site of tyrosine 136 (Q-D-Y (p) -E-P) derived from Human a-Synuclein.
Conjugate	Unconjugated
Tested Applications	IF, WB
Specificity	This antibody detects endogenous level of a-Synuclein only when phosphorylated at tyrosine 136.
Predicted Molecular Weight	18 kDa

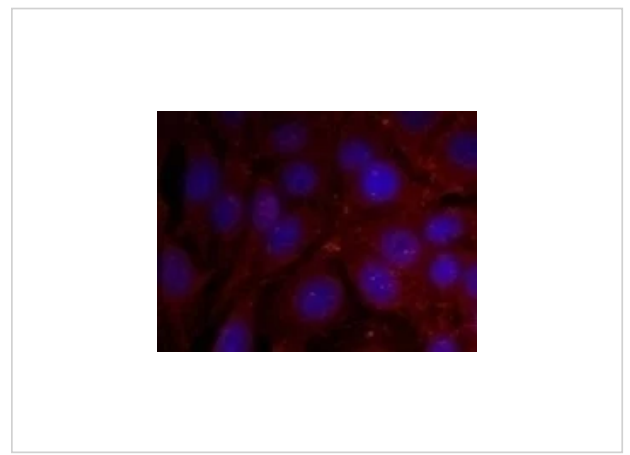
Properties

Purification	Antibodies were purified by affinity-chromatography using epitope-specific phosphopeptide. Non-phospho specific antibodies were removed by chromatography using non-phosphopeptide.
Clonality	Polyclonal
Physical State	Liquid
Buffer	Antibody supplied in phosphate buffered saline (without Mg ²⁺ and Ca ²⁺), pH 7.4, 150mM NaCl, 0.02% sodium azide and 50% glycerol.
Concentration	1 mg/mL
Storage Conditions	Store antibody at -20°C for up to one year.



a Synuclein (phospho Tyr136) Antibody 1

Western blot analysis of lysed extracts from mouse brain tissue using α-Synuclein (Phospho-Tyr136).



a Synuclein (phospho Tyr136) Antibody 2

Immunofluorescence staining of methanol-fixed HeLa cells using α-Synuclein (Phospho-Tyr136).

Disclaimer

Disclaimer	Optimal dilutions/concentrations should be determined by the end user. The information provided is a guideline for product use. This product is for research use only.
-------------------	--

For research use only. For additional information, visit ProSci's [Terms and Conditions Page](#).