

14-3-3 zeta/ delta (phospho Thr232) Antibody

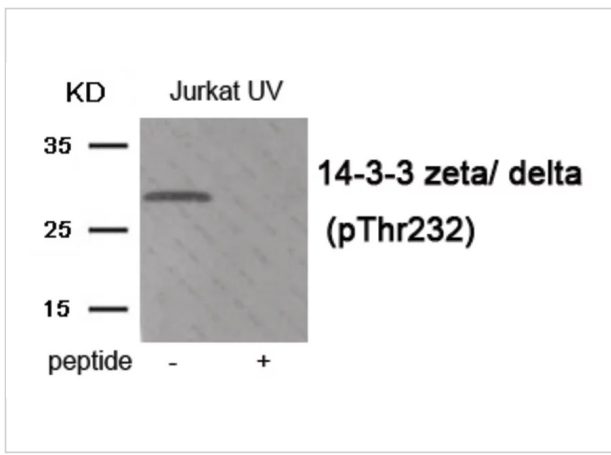
CATALOG NUMBER: 80-004

Specifications

Host Species	Rabbit
Species Reactivity	Human, Mouse, Rat
Immunogen	14-3-3 zeta/ delta (phospho Thr232) antibody was raised against a peptide sequence around phosphorylation site of threonine232 (S-D-T (p)-Q-G) derived from Human 14-3-3 zeta/ delta .
Conjugate	Unconjugated
Tested Applications	WB
Specificity	The antibody detects endogenous level of 14-3-3 zeta/ delta only when phosphorylated at threonine 232.
Predicted Molecular Weight	28 kDa

Properties

Purification	Antibodies were purified by affinity-chromatography using epitope-specific peptide.
Clonality	Polyclonal
Isotype	IgG
Physical State	Liquid
Buffer	Antibody supplied in phosphate buffered saline (without Mg ²⁺ and Ca ²⁺), pH 7.4, 150mM NaCl, 0.02% sodium azide and 50% glycerol.
Concentration	1 mg/mL
Storage Conditions	Store antibody at -20°C for up to one year.



14-3-3 zeta/ delta (phospho Thr232) Antibody 1

Western blot analysis of extracts from Jurkat cells treated with UV using Phospho-14-3-3 zeta/ delta (Thr232) Antibody. The lane on the right is treated with the antigen-specific peptide.

Disclaimer

Disclaimer

Optimal dilutions/concentrations should be determined by the end user. The information provided is a guideline for product use. This product is for research use only.

For research use only. For additional information, visit ProSci's [Terms and Conditions Page](#).