



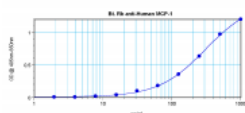
ProSci Incorporated
12170 Flint Place
Poway, CA 92064

Toll Free: +1 (888) 513 9525
Local: +1 (858) 513 2638
Fax: +1 (858) 513 2692

techsupport@prosci-inc.com
prosci-inc.com

MCP-1/MCAF Antibody (biotin)

CATALOG NUMBER: XP-5218Bt



To detect hMCP-1/MCAF by sandwich ELISA (using 100 μ l/well antibody solution) a concentration of 0.25 – 1.0 μ g/ml of this antibody is required. This biotinylated polyclonal antibody, in conjunction with ProSci's Polyclonal Anti-Human MCP-1/MCAF (XP-5218) as a capture antibody, allows the detection of at least 0.2 – 0.4 ng/well of recombinant hMCP-1/MCAF.

Specifications

SPECIES REACTIVITY: Human

TESTED APPLICATIONS: ELISA, WB

APPLICATIONS: ELISA:

Sandwich:

To detect hMCP-1/MCAF by sandwich ELISA (using 100 μ L/well antibody solution) a concentration of 0.25 - 1.0 μ g/mL of this antibody is required. This biotinylated polyclonal antibody, in conjunction with our Polyclonal Anti-Human MCP-1/MCAF (XP-5218) as a capture antibody, allows the detection of at least 0.2 - 0.4 ng/well of recombinant hMCP-1/MCAF.

Western Blot:

To detect hMCP-1(MCAF) by Western Blot analysis this antibody can be used at a concentration of 0.1 - 0.2 μ g/mL. Used in conjunction with compatible secondary reagents the detection limit for recombinant hMCP-1(MCAF) is 1.5 - 3.0 ng/lane, under either reducing or non-reducing conditions.

USER NOTE: Centrifuge vial prior to opening.

IMMUNOGEN: Produced from sera of rabbits pre-immunized with highly pure (>98%) recombinant hMCP-1(MCAF) (human Macrophage Chemoattractant Protein-1).

HOST SPECIES: Rabbit

Properties

PURIFICATION:	Anti-hMCP-1(MCAF) specific antibody was purified by affinity chromatography and then biotinylated.
PHYSICAL STATE:	Lyophilized
STORAGE CONDITIONS:	MCP-1/MCAF antibody is stable for at least 2 years from date of receipt at -20°C. The reconstituted antibody is stable for at least two weeks at 2-8°C. Frozen aliquots are stable for at least 6 months when stored at -20°C. Avoid repeated freeze-thaw cycles.
CLONALITY:	Polyclonal
CONJUGATE:	Biotin

Additional Info

ALTERNATE NAMES:	HC11, MCAF, MCP1, MCP-1, SCYA2, GDCF-2, SMC-CF, HSMCR30, C-C motif chemokine 2, HC11
ACCESSION NO.:	P13500
PROTEIN GI NO.:	126842
OFFICIAL SYMBOL:	CCL2
GENE ID:	6347

Background

FOR RESEARCH USE ONLY

March 9, 2018