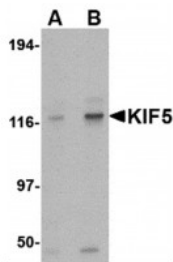
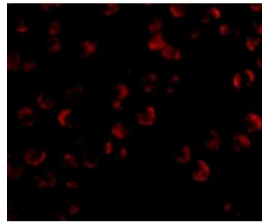


KIF5 Antibody

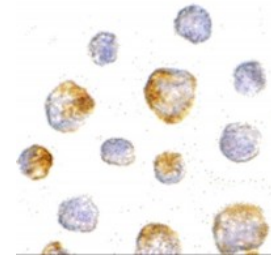
Cat. No.: 4291



Western blot analysis of KIF5 in K562 cell lysate with KIF5 antibody at (A) 0.5 and (B) 1 ug/mL.



Immunofluorescence of KIF5 in K562 cells with KIF5 antibody at 20 ug/mL.



Immunocytochemistry of KIF5 in K562 cells with KIF5 antibody at 5 ug/mL.

Ψ SPECIFICATIONS

HOST SPECIES:	Rabbit
SPECIES REACTIVITY:	Human, Mouse, Rat
IMMUNOGEN:	KIF5 antibody was raised against a 20 amino acid synthetic peptide from near the center of human KIF5. The immunogen is located within amino acids 330 - 380 of KIF5.
TESTED APPLICATIONS:	ELISA, ICC, IF, WB
APPLICATIONS:	KIF5 antibody can be used for detection of KIF5 by Western blot at 0.5 - 1 ug/mL. Antibody can also be used for immunocytochemistry starting at 5 ug/mL. For immunofluorescence start at 20 ug/mL. Antibody validated: Western Blot in human samples; Immunocytochemistry in human samples and Immunofluorescence in human samples. All other applications and species not yet tested.
SPECIFICITY:	KIF5 has at least three known isoforms; this antibody recognizes all three.
POSITIVE CONTROL:	1) Cat. No. 1204 - K562 Cell Lysate 2) Cat. No. 17-004 - K-562 Cell Slide
PREDICTED MOLECULAR WEIGHT:	Predicted: 105, 114 kDa Observed: 118 kDa

Ψ PROPERTIES

PURIFICATION:	KIF5 Antibody is affinity chromatography purified via peptide column.
CLONALITY:	Polyclonal
ISOTYPE:	IgG
CONJUGATE:	Unconjugated
PHYSICAL STATE:	Liquid
BUFFER:	KIF5 Antibody is supplied in PBS containing 0.02% sodium azide.
CONCENTRATION:	1 mg/mL
STORAGE CONDITIONS:	KIF5 antibody can be stored at 4°C for three months and -20°C, stable for up to one year. As with all antibodies care should be taken to avoid repeated freeze thaw cycles. Antibodies should not be exposed to prolonged high temperatures.

Ψ ADDITIONAL INFO

OFFICIAL SYMBOL:	KIF5A
ALTERNATE NAMES:	KIF5 Antibody: NKHC, MY050, SPG10, D12S1889, NKHC1, Kinesin heavy chain isoform 5A, Kinesin heavy chain neuron-specific 1, NKHC
ACCESSION NO.:	Q12840
PROTEIN GI NO.:	143811412
GENE ID:	3798
USER NOTE:	Optimal dilutions for each application to be determined by the researcher.

Ψ BACKGROUND AND REFERENCES

BACKGROUND:	KIF5 Antibody: The kinesin superfamily proteins (KIFs) are microtubule-dependent motors that slide along microtubules and transport cellular organelles and mRNA to different parts of the cell. In neurons, KIF5 performs this role in an anterograde fashion from the neuronal cell body to axonal or dendritic terminals. KIF5 was initially differentiated from the ubiquitously expressed kinesin as being highly enriched in subsets of neurons and selectively concentrated in the cell body. Mutations in one of the three isoforms of KIF5 (KIF5A) are thought to be involved in hereditary spastic paraplegias.
REFERENCES:	1) Hirokawa N. mRNA transport in dendrites: RNA granules, motors and tracks. J. Neurosci. 2006; 26:7139-42. 2) Niclas J, Navone F, Hom-Booher N, et al. Cloning and localization of a conventional KIF5 motor expressed exclusively in neurons. Neuron 1994; 12:1059-72. 3) Fichera M, Lo Giudice M, Falco M, et al. Evidence of kinesin heavy chain (KIF5A) involvement in pure hereditary spastic paraplegia. Neurology 2004; 63:1108-10.

ANTIBODIES FOR RESEARCH USE ONLY.

For additional information, visit ProSci's [Terms & Conditions Page](#).

