

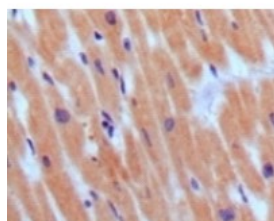
ProSci Incorporated
12170 Flint Place
Poway, CA 92064

Toll Free: +1 (888) 513 9525
Local: +1 (858) 513 2638
Fax: +1 (858) 513 2692

techsupport@prosci-inc.com
prosci-inc.com

BNP3 Antibody [3A6F7C7]

CATALOG NUMBER: 32-121



Immunohistochemical analysis of paraffin - embedded human normal myocardium showing cytoplasmic localization using BNP3 antibody with DAB staining.

Specifications

SPECIES REACTIVITY:	Human
TESTED APPLICATIONS:	IHC
APPLICATIONS:	IHC(P):1:500 - 1:2,000 ELISA:Propose dilution 1:10,000. Determining optimal working dilutions by titration test.
USER NOTE:	Optimal dilutions for each application to be determined by the researcher.
POSITIVE CONTROL:	1) Cat. No. 1301 - Human Heart Tissue Lysate
IMMUNOGEN:	Synthetic peptide corresponding to aa (Glu-Pro-Leu-Gln-Glu-Ser-Pro-Arg-Pro-Thr-Gly-Val-Trp-Cys) of human BNP3.
HOST SPECIES:	Mouse

Properties

STORAGE CONDITIONS:	BNP3 monoclonal antibody can be stored at -20°C, stable for one year. As with all antibodies care should be taken to avoid repeated freeze thaw cycles. Antibodies should not be exposed to prolonged high temperatures.
CLONALITY:	Monoclonal
ISOTYPE:	IgG1
CONJUGATE:	Unconjugated

Additional Info

ALTERNATE NAMES:	Gamma-brain natriuretic peptide, BNP-32, BNP
ACCESSION NO.:	P16860
PROTEIN GI NO.:	113836
OFFICIAL SYMBOL:	NPPB

GENE ID: 4879

Background

BACKGROUND: BNP (brain natriuretic peptide) belongs to a family of structurally similar peptide hormones, which includes atrial natriuretic peptide (ANP), BNP, C-type natriuretic peptide (CNP) and urodilatin. ANP and BNP act mainly as cardiac hormones, produced primarily by the atrium and ventricle, respectively, while the gene encoding C-type natriuretic peptide is expressed mainly in the brain. BNP circulates in blood as a peptide hormone with natriuretic, vasodilatory and renin inhibitory properties. It is secreted predominantly by the left ventricular myocytes in response to volume expansion and pressure overload. These peptides are characterized by a common 17 amino acid ring structure with a disulfide bond between two cystein residues. This ring structure shows high homology between different natriuretic.

REFERENCES:

- 1) Dawson A. Struthers AD. Expert Opin Biol Ther. 2003, Feb, 3(1):107-12. Review.
- 2) Pfister R. Erdmann E. Schneider CA. Dtsch Med Wochenschr. 2003, May 2, 128(18):1007-12.

FOR RESEARCH USE ONLY

January 5, 2018