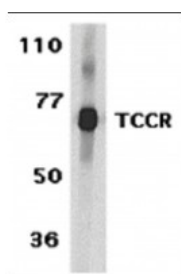


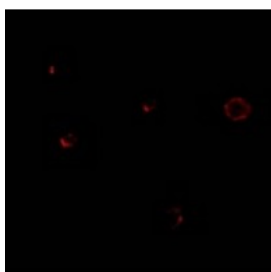


TCCR Antibody

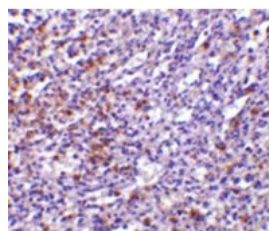
CATALOG NUMBER: 2481



Western blot analysis of TCCR expression in human spleen tissue lysates with TCCR antibody at 1 ug/ml.



Immunofluorescence of TCCR in A549 cells with TCCR antibody at 20 ug/mL.



Immunohistochemistry of TCCR in human spleen tissue with TCCR antibody at 10 ug/mL.

Specifications

| | |
|------------------------------------|--|
| SPECIES REACTIVITY: | Human |
| HOMOLOGY: | Predicted species reactivity based on immunogen sequence: Mouse: (87%) |
| TESTED APPLICATIONS: | ELISA, IF, IHC-P, WB |
| APPLICATIONS: | TCCR antibody can be used for detection of TCCR by Western blot at 1 ug/mL. An approximately 70 kDa band can be detected. Antibody can also be used for immunohistochemistry starting at 10 ug/mL. For immunofluorescence start at 20 ug/mL. Antibody validated: Western Blot in human samples; Immunohistochemistry in human samples and Immunofluorescence in human samples. All other applications and species not yet tested. |
| USER NOTE: | Optimal dilutions for each application to be determined by the researcher. |
| POSITIVE CONTROL: | 1) Cat. No. 1306 - Human Spleen Tissue Lysate 2) Cat. No. 10-901 - Human Spleen Tissue Slide 3) Cat. No. 17-003 - A549 Cell Slide |
| PREDICTED MOLECULAR WEIGHT: | 70 kDa |
| IMMUNOGEN: | TCCR antibody was raised against a synthetic peptide corresponding to amino acids near the amino terminus of human TCCR precursor. The immunogen is located within the first 50 amino acids of TCCR. |
| HOST SPECIES: | Rabbit |

Properties

| | |
|------------------------|---|
| PURIFICATION: | TCCR Antibody is affinity chromatography purified via peptide column. |
| PHYSICAL STATE: | Liquid |
| BUFFER: | TCCR Antibody is supplied in PBS containing 0.02% sodium azide. |

| | |
|----------------------------|--|
| CONCENTRATION: | batch dependent |
| STORAGE CONDITIONS: | TCCR antibody can be stored at 4°C for three months and -20°C, stable for up to one year. As with all antibodies care should be taken to avoid repeated freeze thaw cycles. Antibodies should not be exposed to prolonged high temperatures. |
| CLONALITY: | Polyclonal |
| ISOTYPE: | IgG |
| CONJUGATE: | Unconjugated |

Additional Info

| | |
|-------------------------|---|
| ALTERNATE NAMES: | TCCR Antibody: CRL1, TCCR, WSX1, IL27R, IL-27RA, zcytor1, CRL1, UNQ296/PRO336, Interleukin-27 receptor subunit alpha, Cytokine receptor WSX-1, IL-27 receptor subunit alpha |
| ACCESSION NO.: | NP_004834 |
| PROTEIN GI NO.: | 4759328 |
| OFFICIAL SYMBOL: | IL27RA |
| GENE ID: | 9466 |

Background

BACKGROUND: TCCR Antibody: Upon antigen challenge, T-helper cells differentiate into two functional distinct subsets, Th1 and Th2. Th1 cells produce IL-2, IFN-gamma and lymphotoxin-beta that augment cell mediated immune response while Th2 cells secrete IL-4, IL-5, and IL-10 that enhance humoral immunity. The function of T-helper cells is regulated by cytokines. A novel cytokine receptor was recently identified and cloned. It is a new member in the type I cytokine receptor family and designated TCCR for T-cell cytokine receptor and WSX-1. TCCR deficient mice had impaired Th1 responses to protein antigen challenge, including decreased levels of IFN-gamma and Th1-dependent antibody IgG2a. TCCR is predominately expressed in thymus, spleen, lymph nodes and peripheral blood leukocytes.

REFERENCES:

- 1) Chen Q, Ghilardi N, Wang H, Baker T, Xie MH, Gurney A, Grewal IS and de Sauvage FJ. Development of Th1-type immune responses requires the type I cytokine receptor TCCR *Nature* 2000;407(6806):916-920
- 2) Sprecher,C.A., Grant,F.J., Baumgartner,J.W., Presnell,S.R., Schrader,S.K., Yamagiwa,T., Whitmore,T.E., O'Hara,P.J. and Foster,D.F. Cloning and characterization of a novel class I cytokine receptor *Biochem. Biophys. Res. Commun.* 1998;246(1):82-90

FOR RESEARCH USE ONLY

March 15, 2018