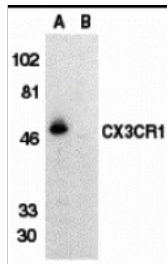




CX3CR1 Peptide

Cat. No.: 2201P



Western blot analysis of CX3CR1 in THP-1 cell lysate in the absence (lane A) or presence (lane B) of blocking peptide (2201P) with CX3CR1 antibody at 1:500 dilution.

Ψ SPECIFICATIONS

LOCATION:	15 amino acids near the extracellular loop domain of human CX3CR1.
SPECIES:	Human
TESTED APPLICATIONS:	Blocking
APPLICATIONS:	CX3CR1 peptide is used for blocking the activity of CX3CR1 antibody.

Ψ PROPERTIES

ALTERNATE NAMES:	V28, CCRL1, GPR13, CMKDR1, GPRV28, CMKBRL1, CX3C chemokine receptor 1, Beta chemokine receptor-like 1, C-X3-C CKR-1
ACCESSION NO.:	NP_001328
PROTEIN GI NO.:	4503171
PHYSICAL STATE:	Liquid
BUFFER:	PBS pH 7.2 (10 mM NaH ₂ PO ₄ , 10 mM Na ₂ HPO ₄ , 130 mM NaCl) containing 0.1% bovine serum albumin and 0.02% sodium azide
CONCENTRATION:	200 ug/mL
STORAGE CONDITIONS:	Store CX3CR1 peptide at -20°C, stable for one year.

Ψ ADDITIONAL INFO

ALTERNATE NAMES:	V28, CCRL1, GPR13, CMKDR1, GPRV28, CMKBRL1, CX3C chemokine receptor 1, Beta chemokine receptor-like 1, C-X3-C CKR-1
ACCESSION NO.:	NP_001328
PROTEIN GI NO.:	4503171
OFFICIAL SYMBOL:	CX3CR1
GENE ID:	1524

FOR RESEARCH USE ONLY.

For additional information, visit ProSci's [Terms & Conditions Page](#).

