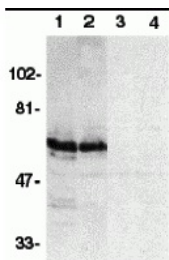




SODD Peptide

Cat. No.: 2143P



Western blot analysis of SODD in HeLa (1,3) and THP-1 (2,4) whole cell lysates in the absence (1,2) or presence (3,4) of blocking peptide (2143P) with SODD antibody at 1:500 dilution.

Ψ SPECIFICATIONS

LOCATION:	15 amino amino terminus of human SODD.
SPECIES:	Human
TESTED APPLICATIONS:	Blocking
APPLICATIONS:	SODD peptide is used for blocking the activity of SODD antibody.

Ψ PROPERTIES

ALTERNATE NAMES:	SODD, BAG-4, SODD, BAG family molecular chaperone regulator 4, Bcl-2-associated athanogene 4
ACCESSION NO.:	AF111116
PROTEIN GI NO.:	4160013
PHYSICAL STATE:	Liquid
BUFFER:	PBS pH 7.2 (10 mM NaH ₂ PO ₄ , 10 mM Na ₂ HPO ₄ , 130 mM NaCl) containing 0.1% bovine serum albumin and 0.02% sodium azide
CONCENTRATION:	200 ug/mL
STORAGE CONDITIONS:	Store SODD peptide at -20°C, stable for one year.

Ψ ADDITIONAL INFO

ALTERNATE NAMES:	SODD, BAG-4, SODD, BAG family molecular chaperone regulator 4, Bcl-2-associated athanogene 4
ACCESSION NO.:	AF111116
PROTEIN GI NO.:	4160013
OFFICIAL SYMBOL:	BAG4
GENE ID:	9530

FOR RESEARCH USE ONLY.

For additional information, visit ProSci's [Terms & Conditions Page](#).

